



Last update 17.02.2021



Table of Contents

1	Introduction	5
1.1	Prerequisites	5
1.1.1	Internet connectivity	5
1.1.2	Office 365 Education accounts for Teachers and Students.....	5
1.1.3	Devices running Windows 10	5
1.1.4	Access to Microsoft Teams or Microsoft School Data Sync	5
2	Setup and configuration	6
2.1	Allow the applications to read Office 365 Education information.....	6
2.2	Set up Remote Learning	7
2.3	Set up sign in to Vision 365.....	8
2.4	Create the class.....	11
2.4.1	Create a class using Microsoft Teams.....	11
2.4.2	Create the class by importing them from your SIS using Microsoft School Data Sync	13
2.5	Install the Vision 365 Teacher application	13
2.5.1	Mass deployment	16
2.5.2	Manage MSIX deployment (sideloading application)	16
2.6	Install the Vision 365 Student application	17
2.6.1	Mass deployment	17
2.6.2	Manage MSIX deployment (sideloading application)	17
2.7	Vision 365 Student control component.....	18
2.7.1	Install the Vision 365 Student control component using the PowerShell script.....	18
2.7.2	Install the Vision 365 Student control component using an MSI file	20
2.7.3	Mass deployment	23
3	Administration	24
3.1.	Authentication and Classroom providers	24
3.2.	Configure Enterprise Settings.....	24
3.3.	Sign Out.....	24
3.4.	Google Analytics (deprecated)	25
3.5.	Additional configuration for Microsoft Azure AD.....	25
3.6.	Adjust bandwidth consumption and network timeout (deprecated)	31
4	Admin reports.....	33

5	Admin policies.....	39
5.1	Student monitoring.....	40
5.2	IP address restrictions.....	40
5.3	Active hours	41
5.4	App behaviour.....	43
5.5	Networking.....	44
5.5.1	Demo quality level	44
5.5.2	Connection timeout	44
6	Troubleshooting	45
6.1	Logs.....	46
6.1.1	Student logs	46
6.1.2	Teacher logs	46
6.2	How to login with a different user if I chose to store my credentials with Windows.....	47
6.3	Prevent students from turning off web filter extension for Edge.....	48

1 Introduction

This document is intended to guide the school IT administrators through the installation and configuration steps for the **Vision 365** application for Windows.

1.1 Prerequisites

1.1.1 Internet connectivity

To use the **Vision 365** application, make sure that the **Teacher** and **Student** devices always have internet connectivity.

1.1.2 Office 365 Education accounts for Teachers and Students

To use the **Vision 365** application, make sure that all the teachers and students have individual Office 365 Education accounts. As part of the setup, the Office 365 Administrator needs to approve the application so that it can be used.

Alternatively, you can use **Google** accounts from the **G Suite for Education** for teachers and students to sign in the **Vision 365** applications. For more information on how to use Google accounts, refer to the [Authentication and Classroom providers](#) section.

1.1.3 Devices running Windows 10

Windows 10 version **1809** and above is required to run the latest version of the **Vision 365 Teacher** and **Student** applications.

NOTE: If you are running an older version of Windows 10, the available version of the **Vision 365** applications from the Microsoft Store is **10.7.1516**.

1.1.4 Access to Microsoft Teams or Microsoft School Data Sync

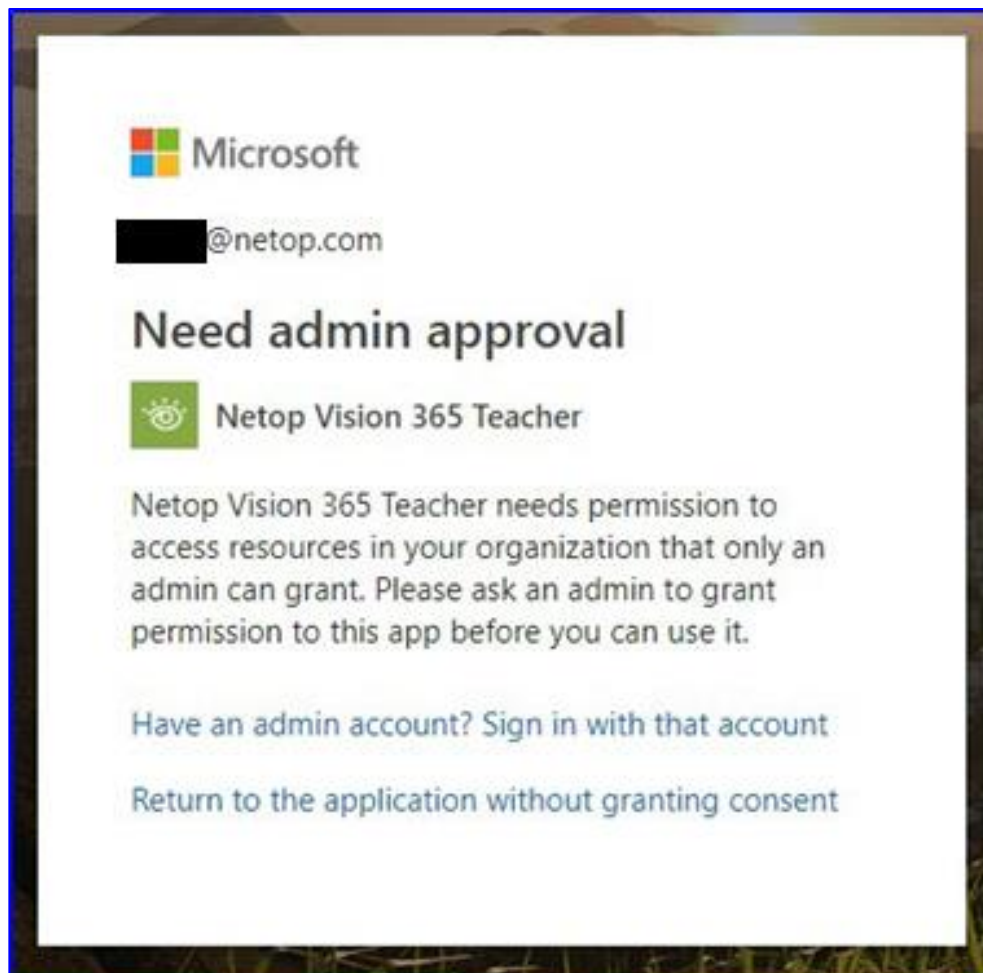
Microsoft Teams and **Microsoft School Data Sync** provide ways to create or import classes that can be used by **Vision 365**.

2 Setup and configuration

2.1 Allow the applications to read Office 365 Education information

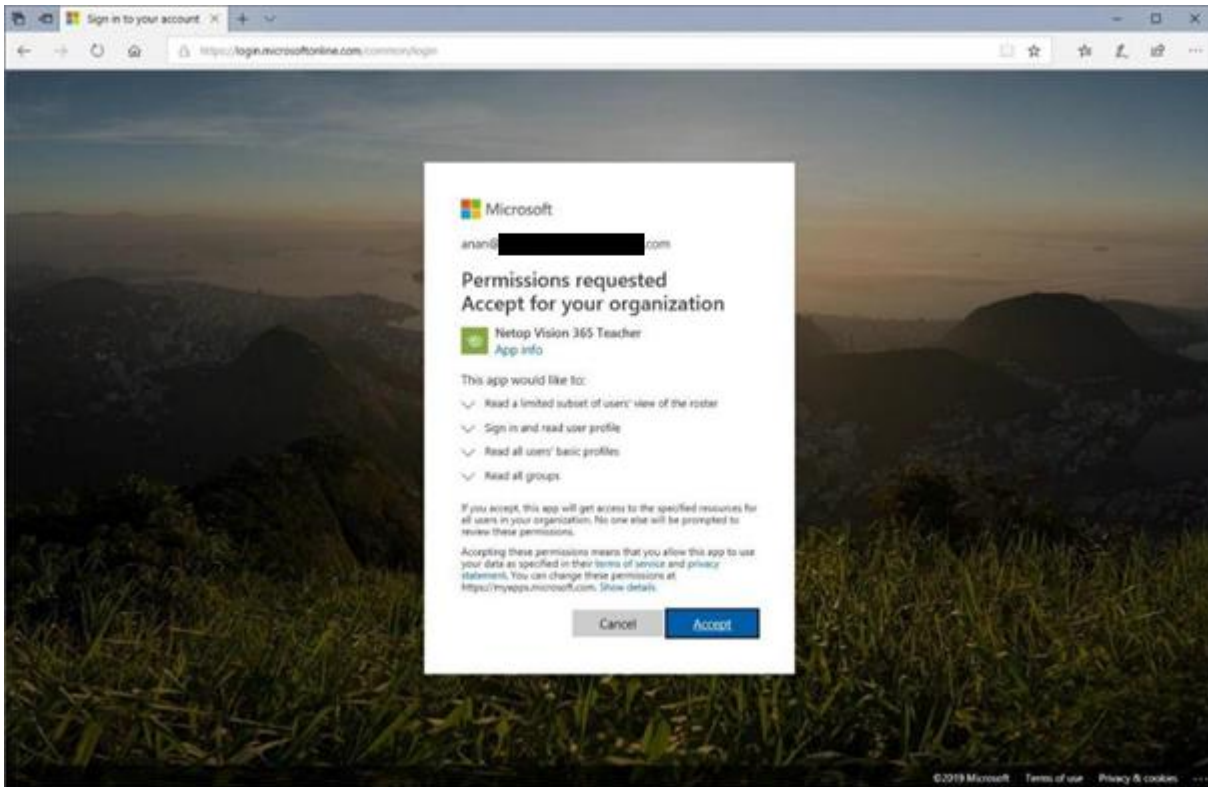
For the **Vision 365** applications (Teacher and Student) to work, they require permissions to read data from **Office 365 Education** (e.g. The classes the Teacher is a part of). In order to grant access, an Office 365 administrator needs to accept them.

Users who are not administrators see this message when they start the **Vision 365 Teacher** application.



To grant the required permissions (one time for each app), proceed as follows for the **Vision 365 Teacher** app.

Refer to the following [link](#) and click on **Accept**.



2.2 Set up Remote Learning

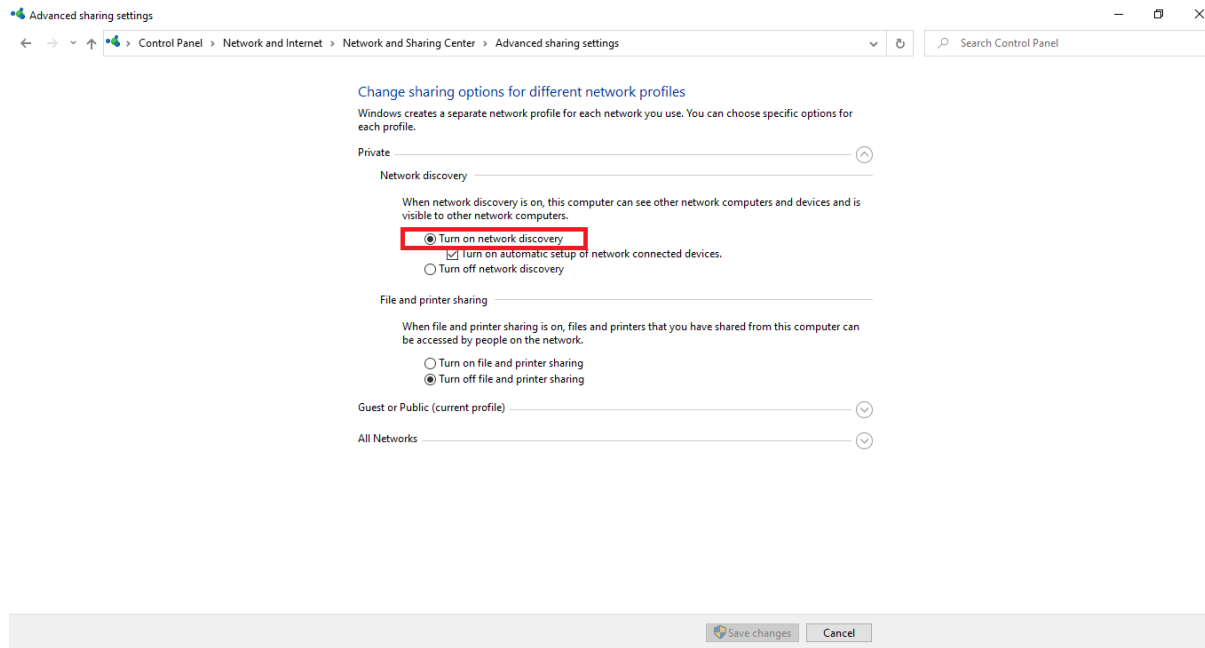
Prerequisites:

- A router that supports the UPnP protocol and is active
- A different option than the **Match the Teacher IP** address
- Network Discovery turned ON in the active network profile

To set up the remote learning feature, proceed as follows:

1. Go to Control Panel.
2. Go to Network and Internet.
3. Go to Network and Sharing Center.
4. Go to Change advanced sharing settings.

5. Turn on network discovery for your current network profile.



2.3 Set up sign in to Vision 365

The **Vision 365** application allows you to set up a school account for **Teachers** and **Students** to easily sign in the application.

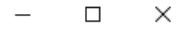
NOTE: You can set up multiple school accounts for the **Vision 365 Teacher** application.

To setup a school account for **Vision 365**, proceed as follows:

1. Click on Start button.
2. Go to Settings.

3. Go to Accounts.

Settings



Windows Settings

Find a setting



System

Display, sound, notifications, power



Devices

Bluetooth, printers, mouse



Phone

Link your Android, iPhone



Network & Internet

Wi-Fi, airplane mode, VPN



Personalization

Background, lock screen, colors



Apps

Uninstall, defaults, optional features



Accounts

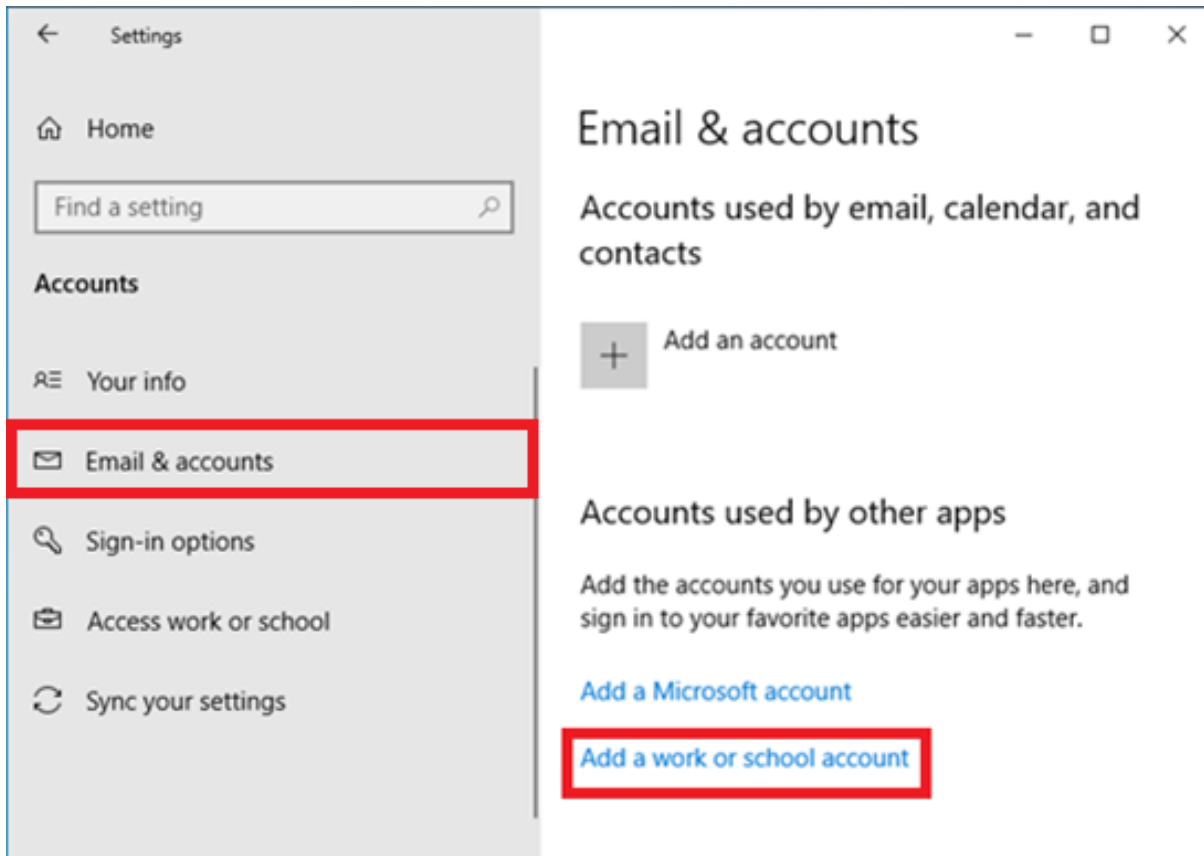
Your accounts, email, sync, work, family



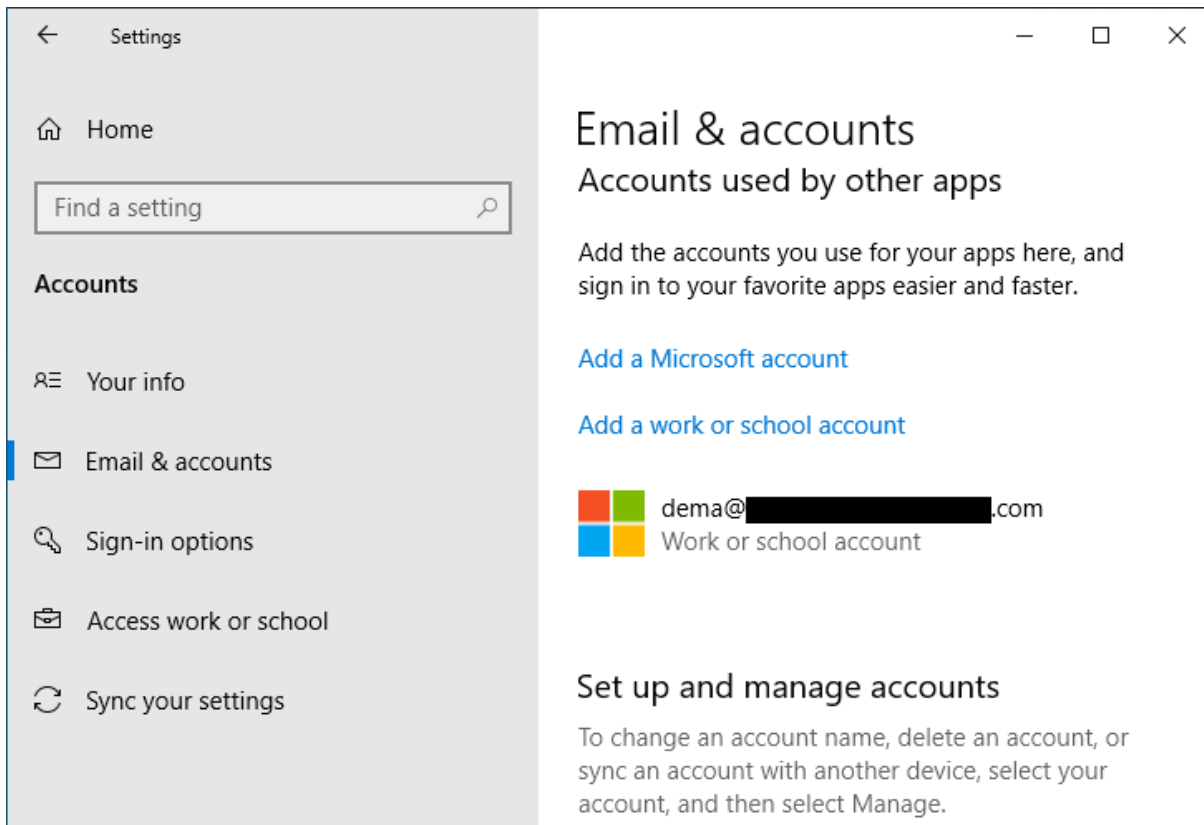
Time & Language

Speech, region, date

- 4. Go to **Email & accounts**.
- 5. Click on the **“Add a work or school account”** button.



- 6. Specify the school account. The account is successfully added.



2.4 Create the class

Vision 365 for Windows uses classes that are part of the **Office 365 Education** account.

To create the classes, you can use:

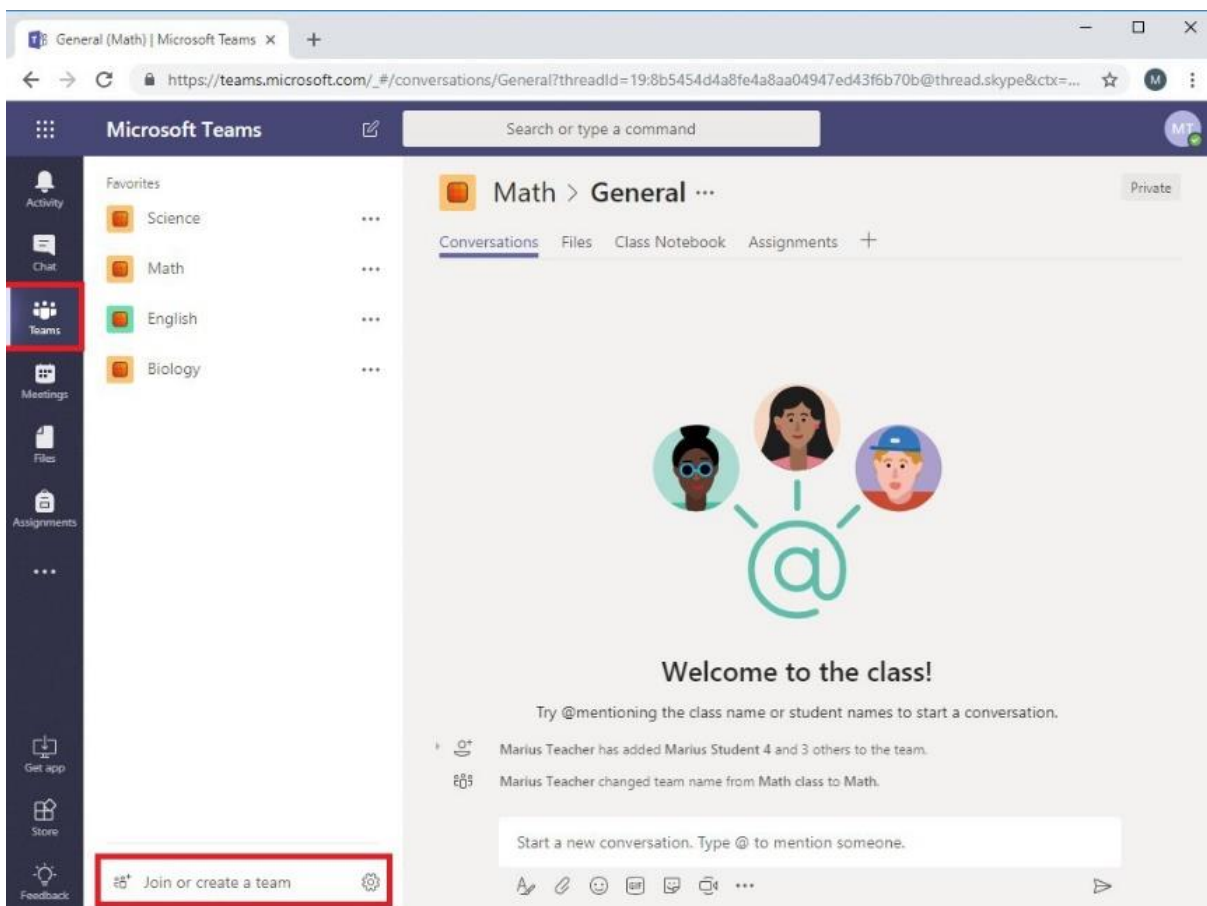
- **Microsoft Teams** - to manually create new classes (or use existing ones)
- **Microsoft School Data Sync** - to import the classes from your SIS (Student Information System)

If you create classes using either **Teams** or **Microsoft School Data Sync**, no further action is required. **Vision 365** detects automatically the classes associated with the teacher's Microsoft account. Those classes are loaded into the **Vision 365** application.

2.4.1 Create a class using Microsoft Teams

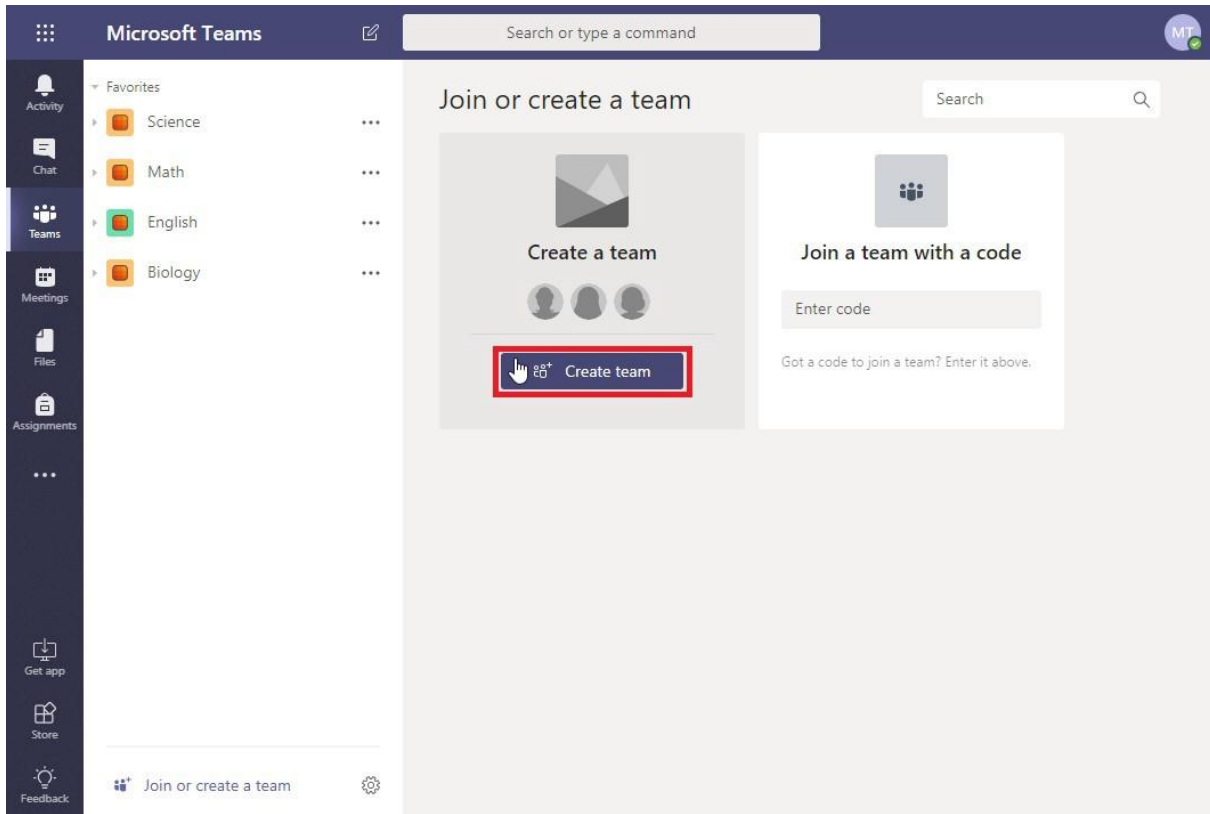
To create a class using the **Microsoft Teams** application, proceed as follows:

1. Go to <http://teams.microsoft.com>.
2. Log in using your **Office 365 administrator** account credentials (Teacher accounts can be used as well).

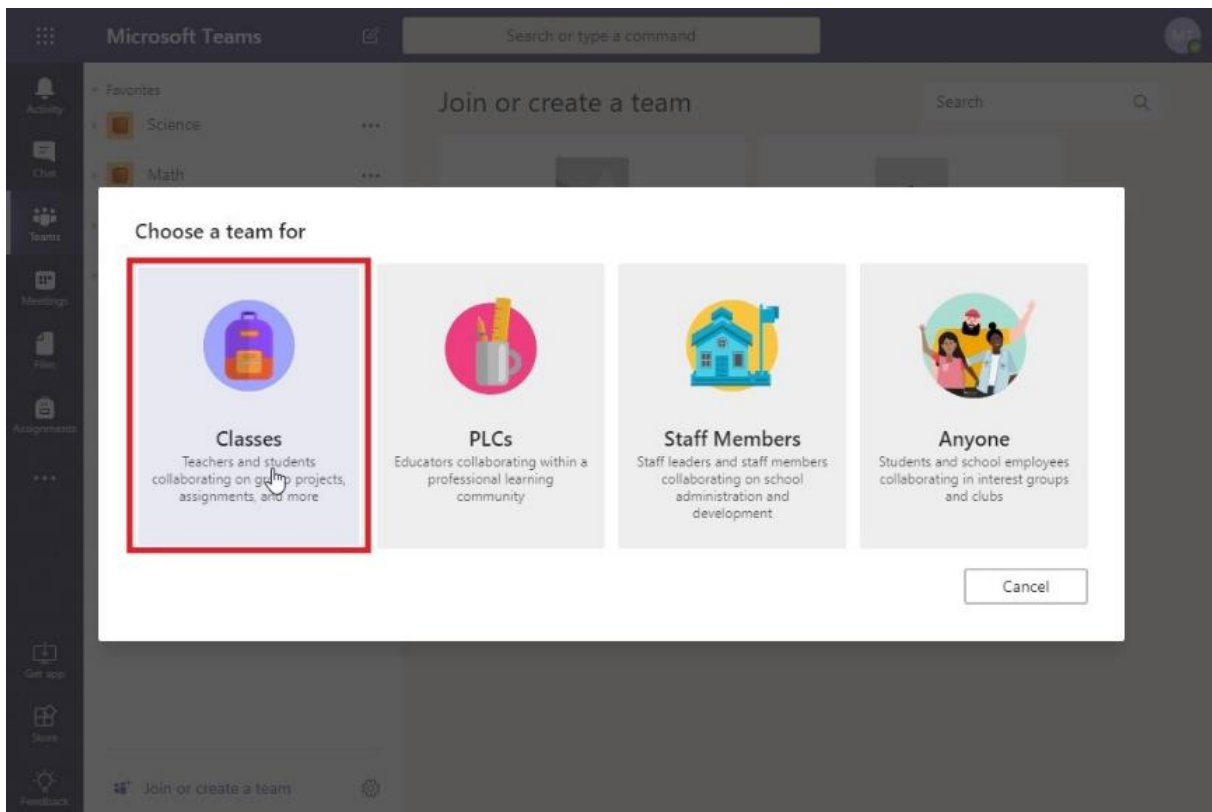


3. Go to the **Teams** tab.
4. Click on the **Join or create a team** button.

5. Click on the **Create team** button.

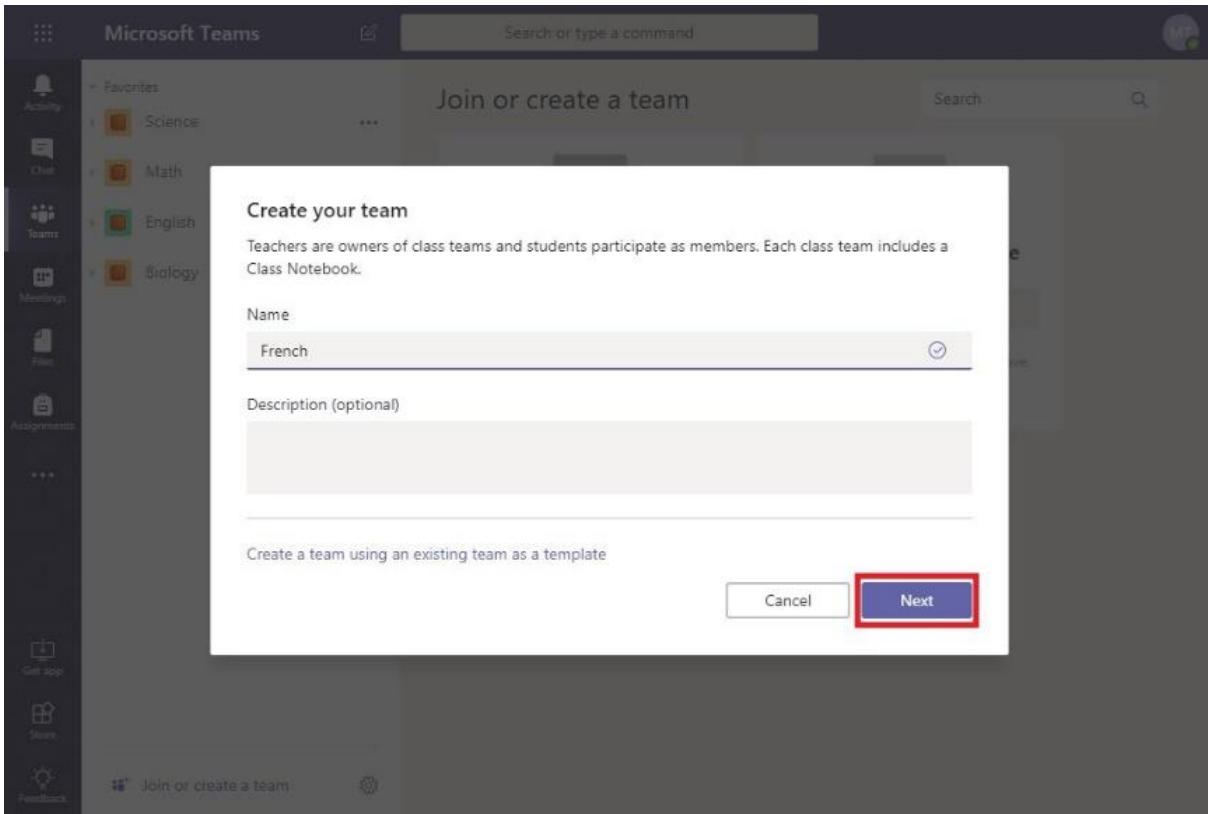


6. Click on the **Classes** button.



7. Specify a **Name** for the class.

8. Click on **Next**. This name is displayed in the list of classes in the teacher application.



NOTE: You can use one of the existing classes as a template for the creation of a new class (click on the **Create a team using existing team as template** button).

9. Search for the students and teachers you want to add in the class.

10. Click on the **Add** button.

NOTE: A student is identified as a **member** and a teacher as an **owner**. The user used to authenticate in Microsoft Teams is set as the **owner**.

11. When you finish adding the students and teachers, click on the **Close** button. The class is created.

2.4.2 Create the class by importing them from your SIS using Microsoft School Data Sync

Microsoft School Data Sync reads rosters from your **SIS** and creates classes into **Office 365 Education**. Information on how to use it to import your data is available [here](#).

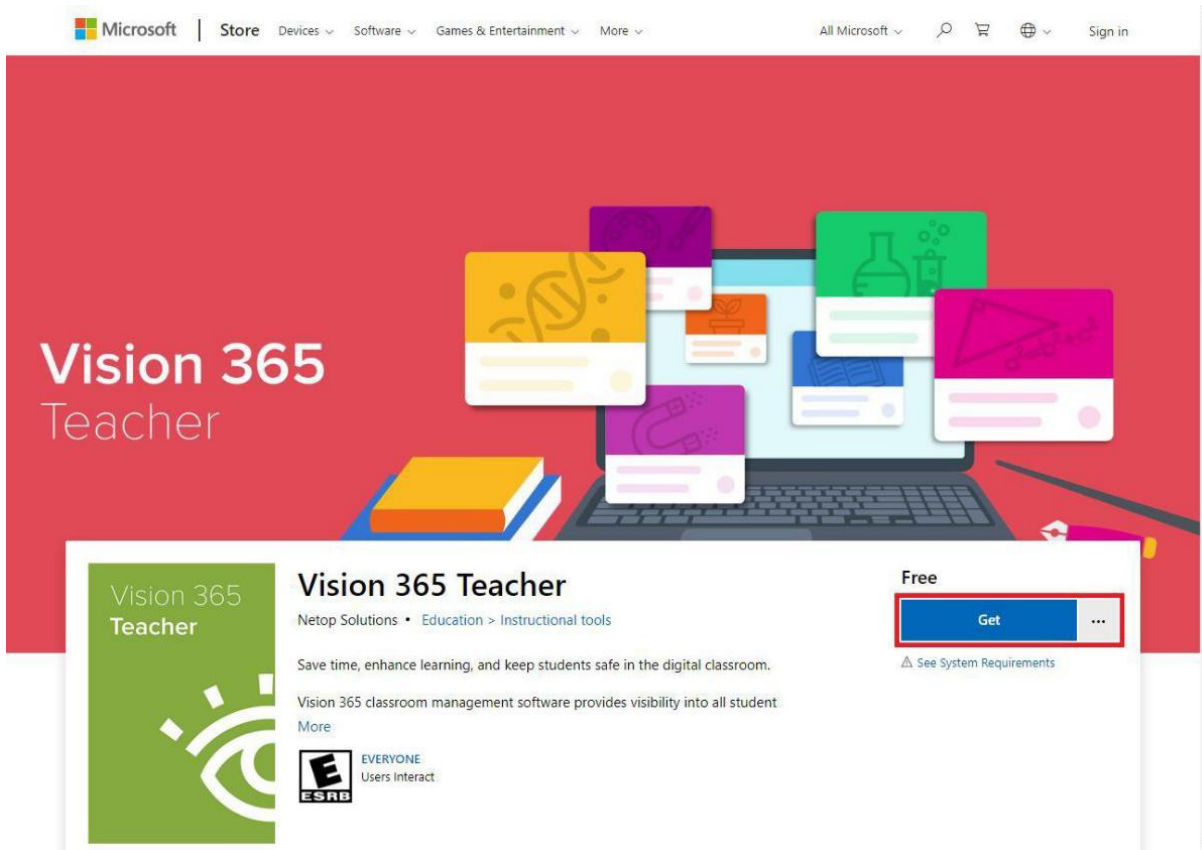
2.5 Install the Vision 365 Teacher application

To manually install the **Vision 365 Teacher** application, proceed as follows:

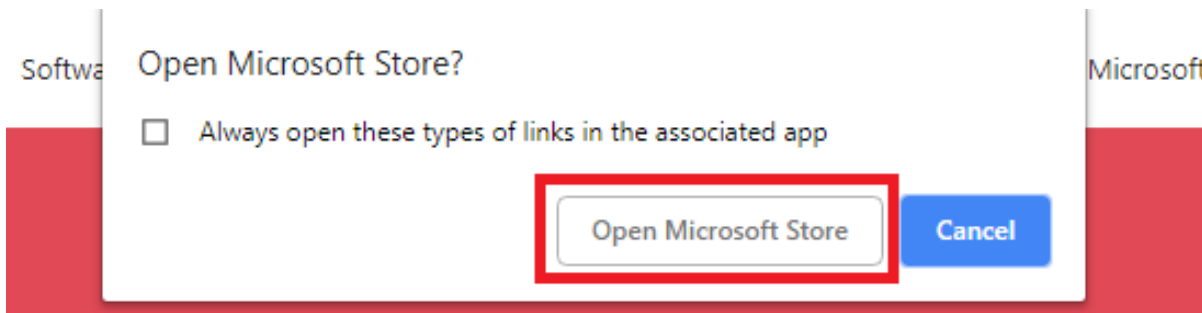
1. Go to the **Vision 365 Teacher** application in the Microsoft Store.



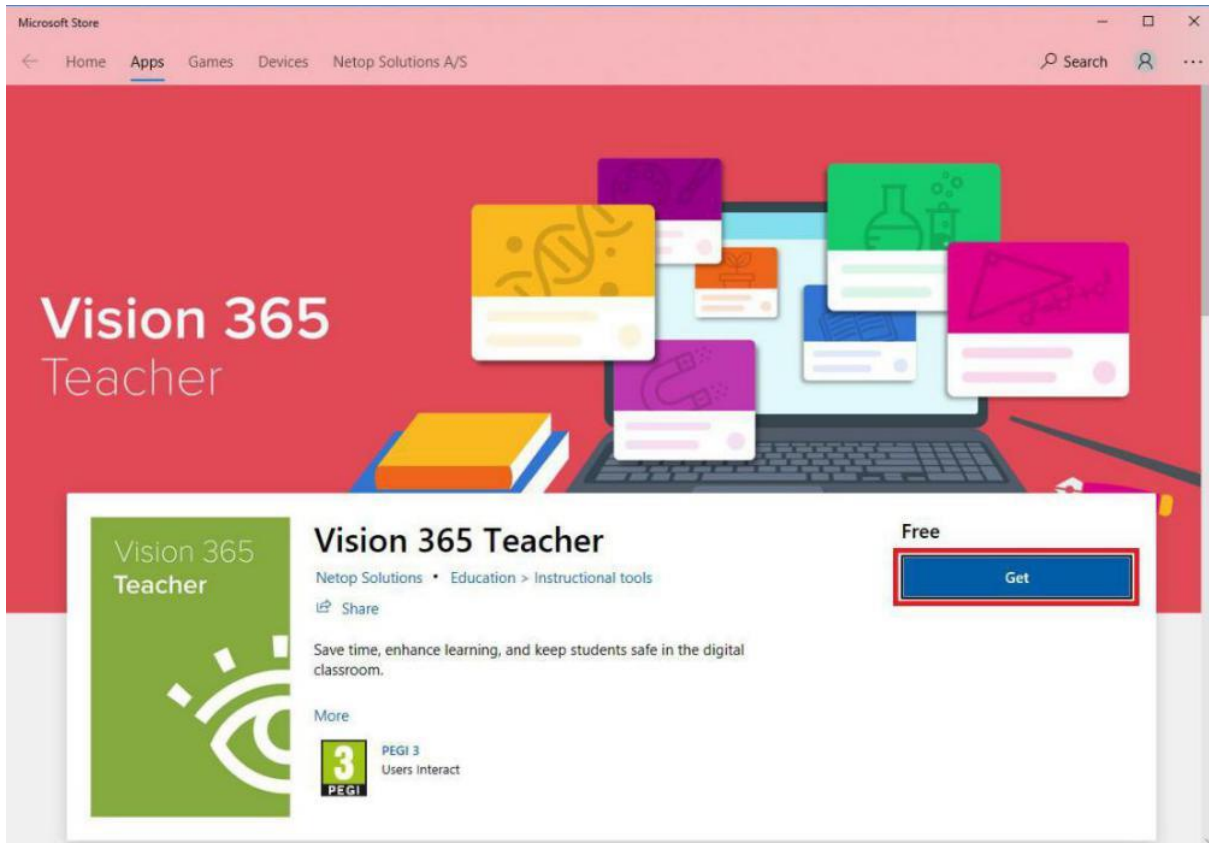
2. Click on the **Get** button.



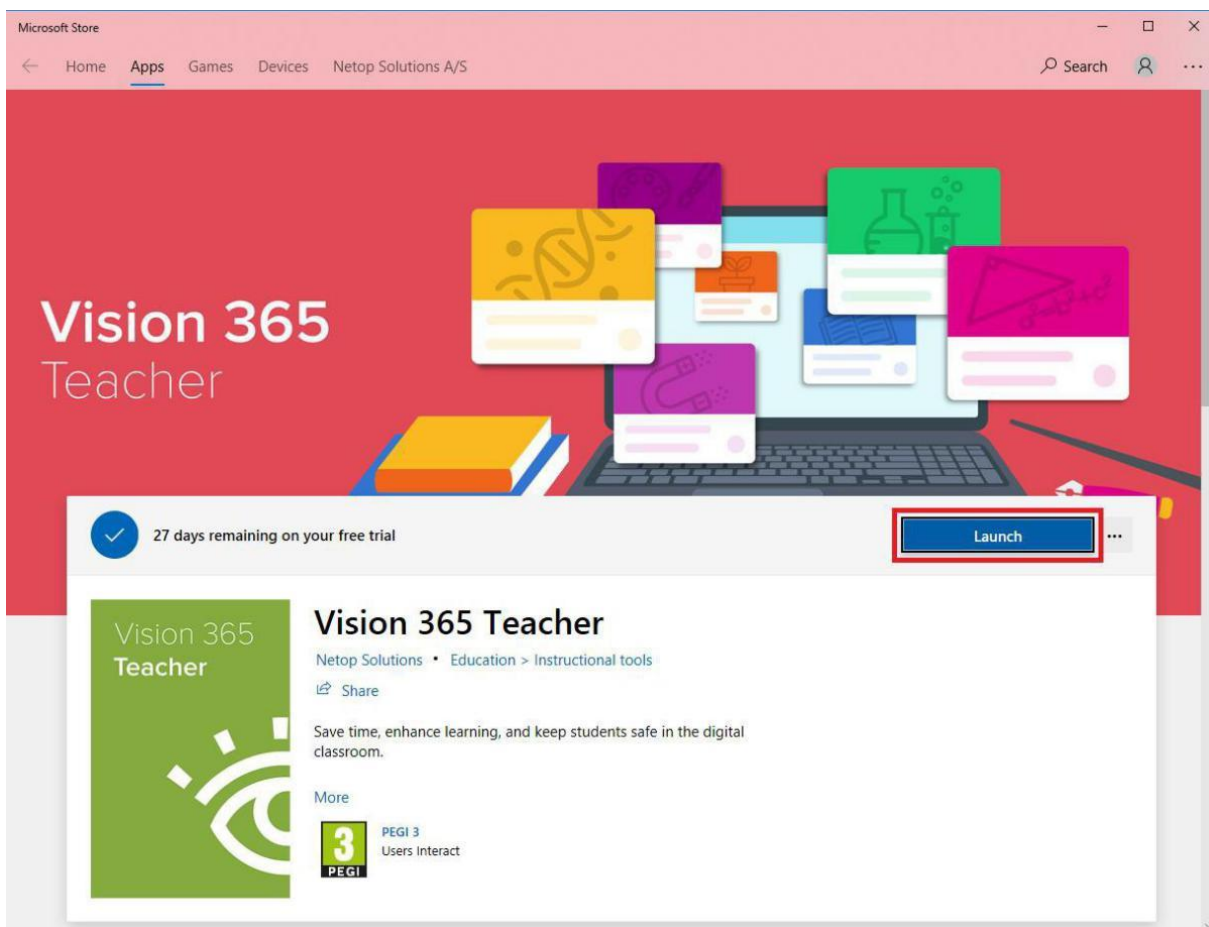
3. Click on the **Open Microsoft Store** button.



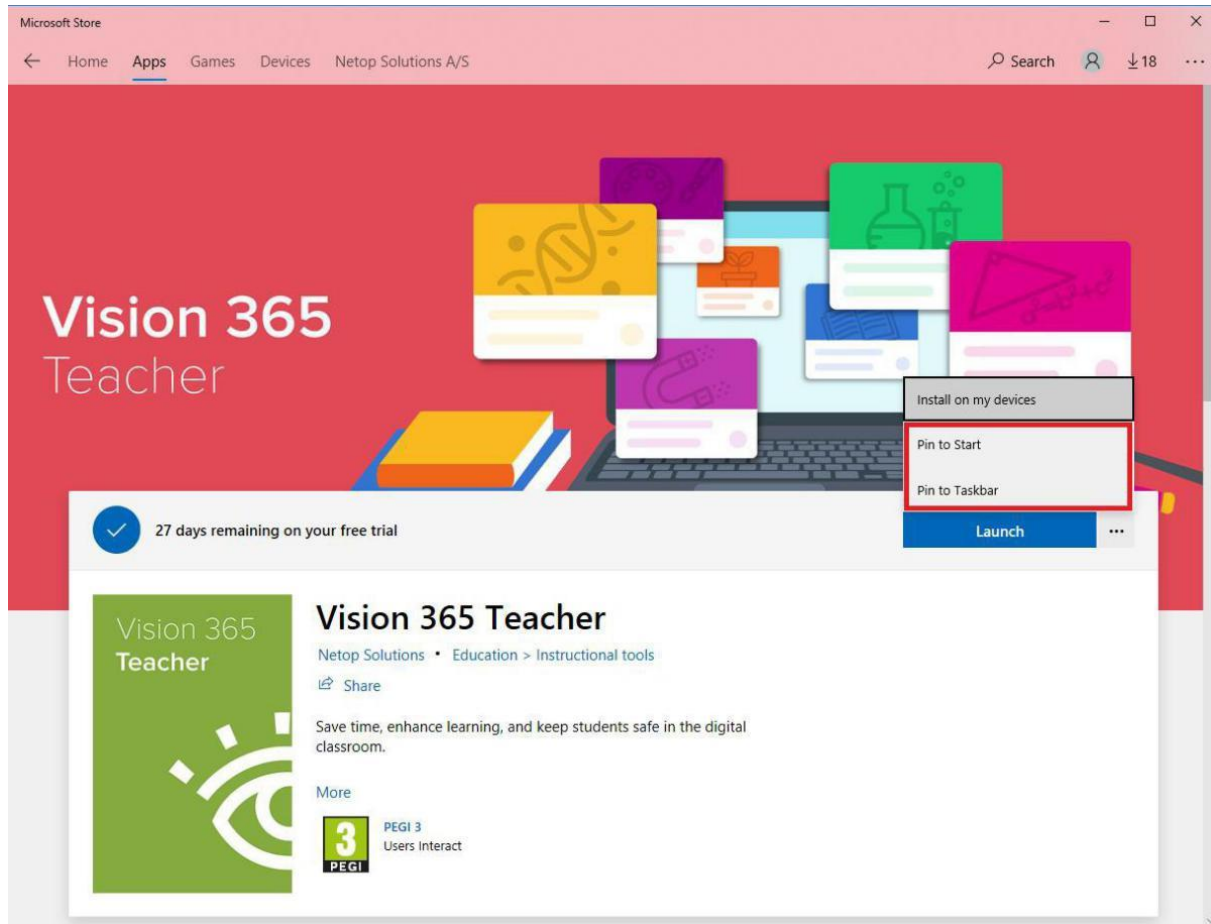
4. Click on the **Get** button.



5. Click on the **Launch** button.



6. You can also use the **Pin to Start** and **Pin to taskbar** from the Microsoft Store.



To watch the installation video of the **Vision 365 Teacher** application, refer to the following video [link](#).

2.5.1 Mass deployment

- To distribute apps from your Microsoft Store for Education – refer to the following Microsoft [article](#)
- To distribute apps using Microsoft Intune – refer to the following Microsoft [article](#)
- To distribute apps using SCCM – refer to the following Microsoft [article](#)

2.5.2 Manage MSIX deployment (sideloading application)

Prerequisites:

- To use and deploy the MSIX package, Windows 10 version **1809** or later is required
- Make sure that you enable sideload apps mode; for more information about Sideload, refer to the following Microsoft [article](#)
- You can download the MSIX package from the following [link](#)
- A **Dependencies** folder which is part of the MSIX package that you download from the above link, contains both the x86 and x64 necessary package files that are necessary to be installed prior to the Vision Teacher application

NOTE:

- If you install on an earlier version, the following message is displayed: "**The .msixbundle is not**
10/12/2020

supported. To resolve the error, update to Windows 10 1809 (or later) or rebuild the app bundle as .appxbundle".

- To install the application, you only need the **Vision 365 Teacher** bundle
- You cannot upgrade to the latest **Vision 365** (sideloading app) version from the Microsoft Store, or vice-versa. The **Vision 365** application from the Microsoft Store and the latest **Vision 365** (sideloading app) version are two separate applications.

To install the application, proceed as follows:

1. Download the **Vision 365 Teacher** bundle.
2. Open the **Vision 365 Teacher** bundle.
3. Execute the **TeacherApp.msix** file.

For more information on how to manage and deploy MSIX packages, refer to the following Microsoft [article](#).

2.6 Install the Vision 365 Student application

To manually install the **Vision 365 Student** application, proceed as follows:

1. On the student device(s), go to the **Vision 365 Student** application in the Microsoft Store.



2. Repeat steps 2-6 from [Install the Vision 365 Teacher application](#).

To watch the installation video of the **Vision 365 Student** application, refer to the following video [link](#).

2.6.1 Mass deployment

- To distribute apps from your Microsoft Store for Education – refer to the following Microsoft [article](#).
- To distribute apps using Microsoft Intune – refer to the following Microsoft [article](#).
- To distribute apps using SCCM – refer to the following Microsoft [article](#).

2.6.2 Manage MSIX deployment (sideloading application)

Prerequisites:

- To use and deploy the MSIX package, Windows 10 version **1809** or later is required
- Make sure that you enable sideload apps mode; for more information about Sideload, refer to the following Microsoft [article](#)
- You can download the MSIX package from the following [link](#)
- A **Dependencies** folder which is part of the MSIX package that you download from the above link, contains both the x86 and x64 necessary package files that are necessary to be installed prior to the Vision Student application

NOTE:

- If you install on an earlier version, the following message is displayed: "***The .msixbundle is not supported. To resolve the error, update to Windows 10 1809 (or later) or rebuild the app bundle as .appxbundle***".
- You cannot upgrade to the latest **Vision 365** (sideloading app) version from the Microsoft Store, or vice-versa. The **Vision 365** application from the Microsoft Store and the latest **Vision 365** (sideloading) version are two separate applications.

To install the application, proceed as follows:

1. Download the **Vision 365 Student** bundle.
2. Open the **Vision 365 Student** bundle.
3. Execute the **StudentApp.msix** file.

For more information on how to manage and deploy MSIX packages, refer to the following Microsoft [article](#).

2.7 Vision 365 Student control component

The **Vision 365 Student Control Component** is required for the control functions to work (Filter Web, mouse, and keyboard control). If it is not installed, the student shows up in the teacher application. The above control functions do not work.

NOTE: Make sure that the **Vision Student 365** application is installed before you proceed with the installation of the **Vision 365 Student Control Component**.

The control component can be installed in different ways:

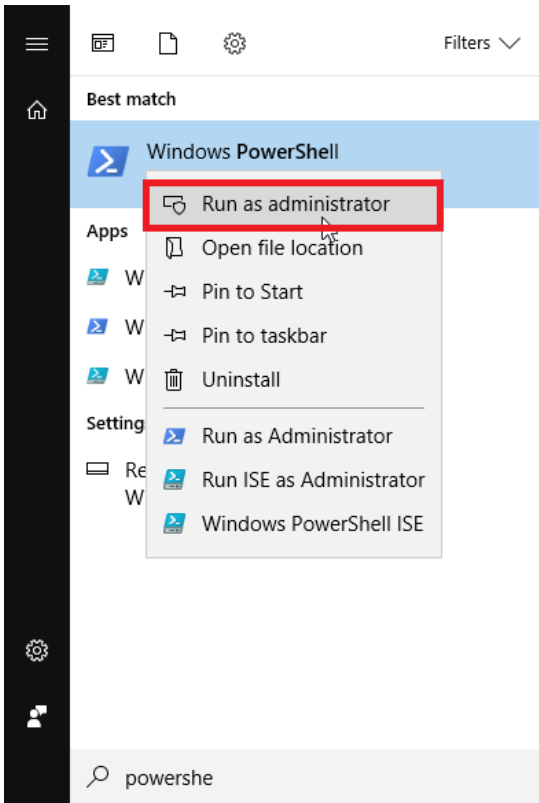
- Using a **PowerShell** script
- Using an **MSI** file

2.7.1 Install the Vision 365 Student control component using the PowerShell script

To install the **Vision 365 Student control component** using a PowerShell script, proceed as follows:

1. Download the archive from the following [link](#).
2. Extract the zip file on the student device(s). In the zip file you find 2 PowerShell scripts:
 - **InstallStudentServices.ps1** (you use this PowerShell script to install the control component)
 - **UninstallStudentServices.ps1** (you use this PowerShell script to uninstall the control component)
3. Open the Windows start bar.
4. Search for **Windows PowerShell**.
5. Open the **Windows PowerShell** as an administrator. To do so, right-click on the **Windows PowerShell**

option and select the **Run as administrator** option.



6. Navigate to the location of the PowerShell script.
7. Execute the **InstallStudentServices.ps1** PowerShell script.

```
PS D:\> .\InstallStudentServices.ps1
.\InstallStudentServices.ps1 : File D:\InstallStudentServices.ps1 cannot be loaded because running scripts is disabled on this system. For more information, see about_Execution_Policies at https://go.microsoft.com/fwlink/?LinkID=135170.
At line:1 char:1
+ ~~~~~
+ .\InstallStudentServices.ps1
+ ~~~~~
+ CategoryInfo          : SecurityError: (:) [], PSSecurityException
+ FullyQualifiedErrorId : UnauthorizedAccess
PS D:\>
```

If you run into the following error, make sure that you change the **Execution Policy** to run the installation. You do this by running **Set-ExecutionPolicy -ExecutionPolicy RemoteSigned**. Type in **Y** to accept the change for this script only.

```
PS D:\> Set-ExecutionPolicy -ExecutionPolicy RemoteSigned
Execution Policy Change
The execution policy helps protect you from scripts that you do not trust. Changing the execution policy might expose you to the security risks described in the about_Execution_Policies help topic at https://go.microsoft.com/fwlink/?linkID=135170. Do you want to change the execution policy?
[Y] Yes [A] Yes to All [N] No [L] No to All [S] Suspend [?] Help (default is "N"): Y
PS D:\>
```

If you are given a Security Warning as the one below, type **R**.

```
PS C:\Users> .\InstallStudentServices.ps1
Security warning
Run only scripts that you trust. While scripts from the internet can be useful, this script can potentially harm your computer. If you trust this script, use the Unblock-File cmdlet to allow the script to run without this warning message. Do you want to run C:\Users\InstallStudentServices.ps1?
[D] Do not run [R] Run once [S] Suspend [?] Help (default is "D"): R
```

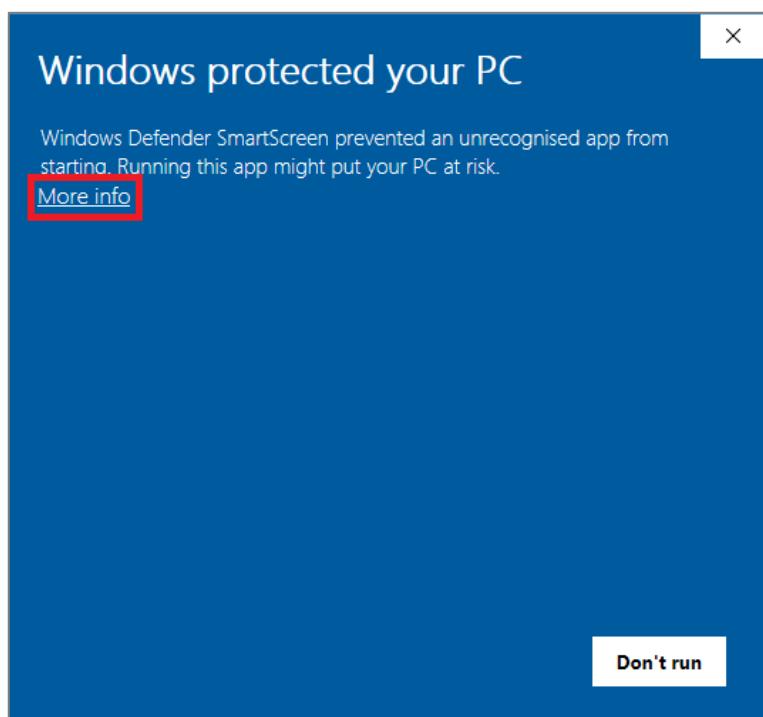
8. Once the installation finishes, a message like the one below is displayed.

```
Running C:\Users\InstallStudentServices.ps1
Installing VisionStudentServices.msi
Installing VisionStudentServices.msi done
Transcript stopped, output file is C:\Users\mane\AppData\Local\Temp\VisionStudentServices\PowerShell_transcript.RO-VM-MA
NE10.mSD+qvTY.20181017043112.txt
PS C:\Users>
```

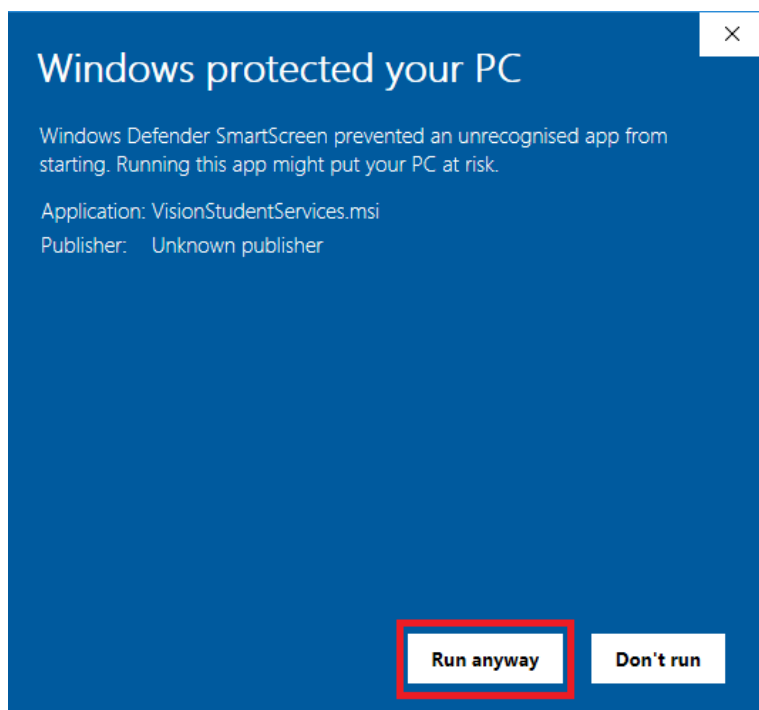
2.7.2 Install the Vision 365 Student control component using an MSI file

To install the **Vision 365 Student control component** using the **MSI** file, proceed as follows:

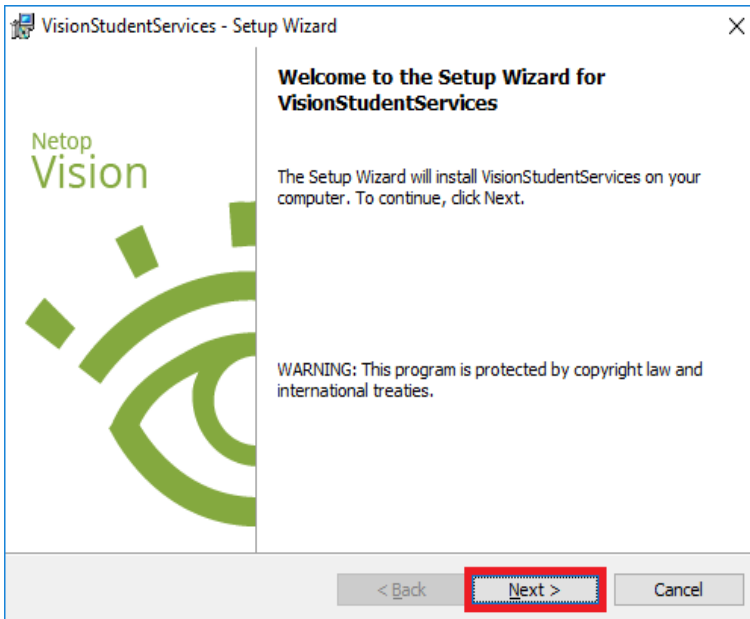
1. Download the **MSI** file from the following [link](#) on the students' devices.
2. Execute the **MSI** file. If you are prompted with the following screen, click on the **More info** button.



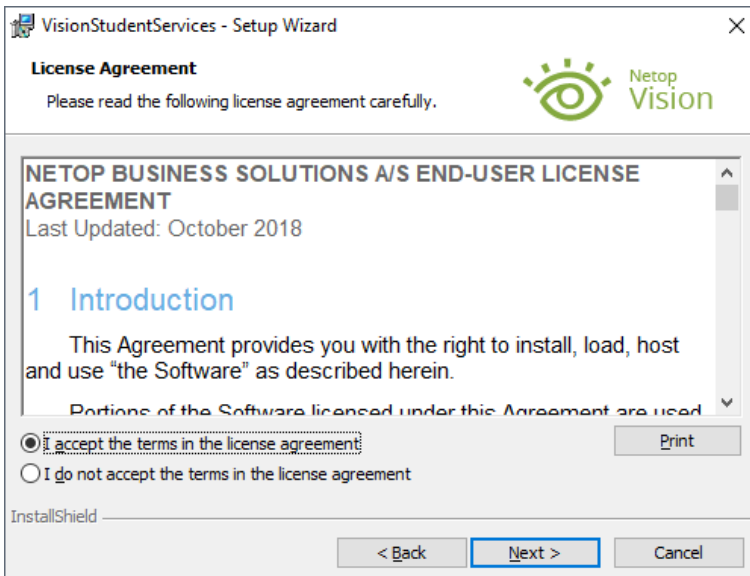
3. Click on the **Run anyway** button.



4. Click on the **Next** button.

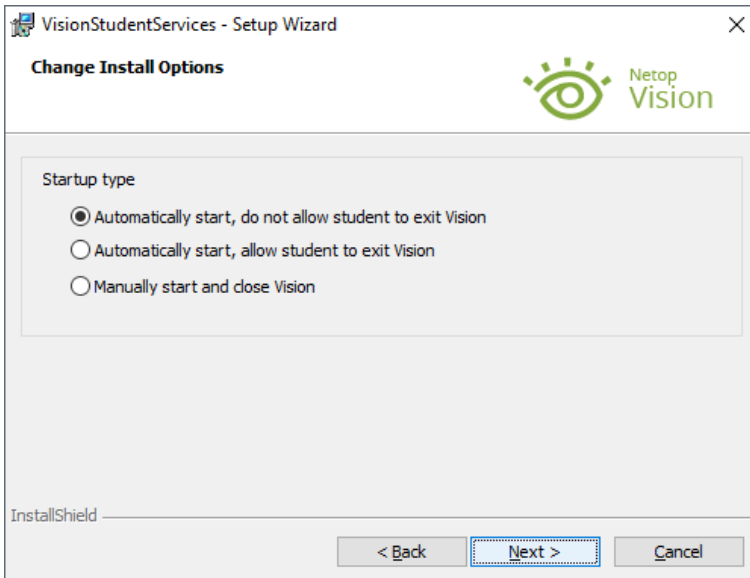


5. Click on **Next**.

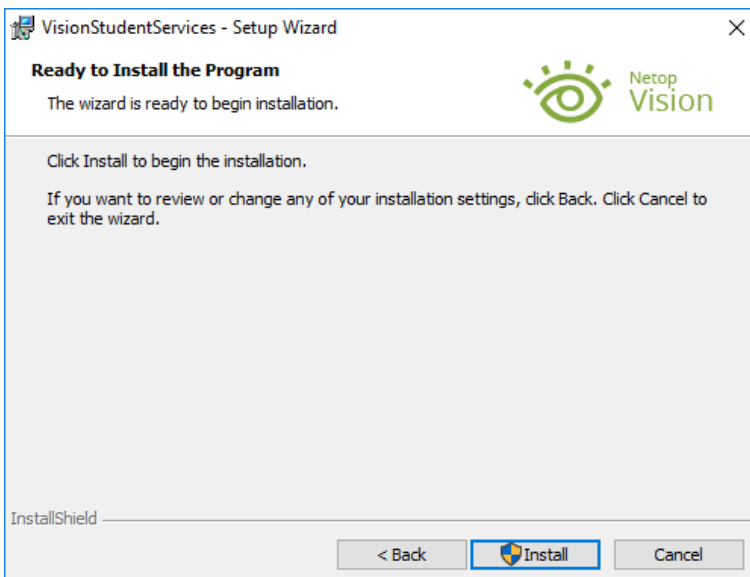


6. Select one of the **Startup type** according to your needs.

7. Click on **Next**.

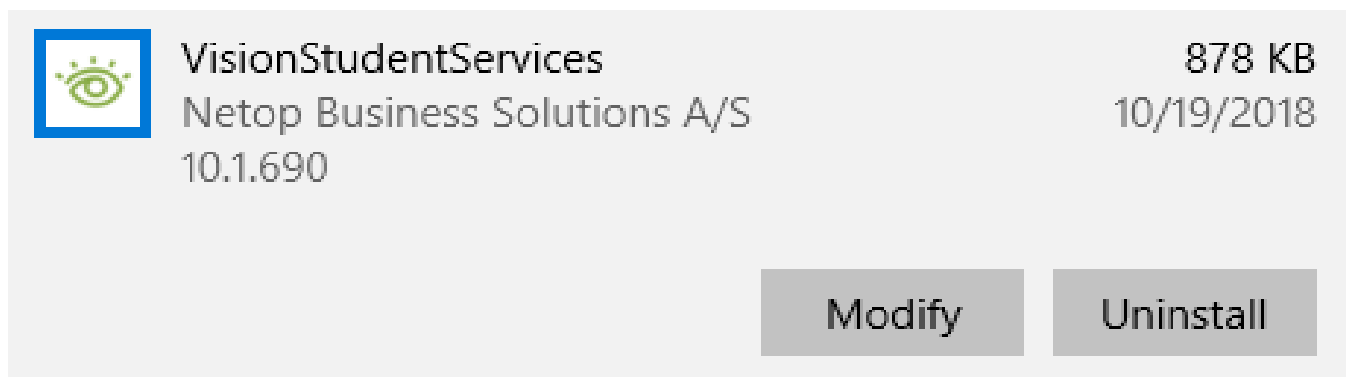


8. Click on the **Install** button (administrator permissions are required on the device).



9. Click on **Finish**.

NOTE: To uninstall the **Vision 365 Student control component**, go to **Control Panel > Add or remove programs** and search for **VisionStudentServices**.



2.7.3 Mass deployment

Administrators can specify the Startup Type option for the Control Component by using the `OPTION_STARTUP_TYPE` parameter when installing or deploying the `VisionStudentServices.msi` file.

The `OPTION_STARTUP_TYPE` parameter can have one the following values:

- `OPTION_STARTUP_TYPE = 1` (Manually start and close Vision)
- `OPTION_STARTUP_TYPE = 2` (Automatically start, allow student to exit Vision)
- `OPTION_STARTUP_TYPE = 3` (Automatically start, do not allow student to exit Vision)

For example, the following command installs the Control Component silently, with the “Automatically start, do not allow student to exit Vision” Startup Type option:

```
msiexec /i VisionStudentServices.msi OPTION_STARTUP_TYPE=3 /qn
```

To deploy the **MSI** file using the **Group Policy**, refer to the following Microsoft [article](#).

3 Administration

3.1. Authentication and Classroom providers

Microsoft Teams for Education is the default authentication and classroom provider for the Vision **Student** and **Teacher** applications. Administrators can switch to **G Suite for Education** or to **Edlink** as the authentication and classroom provider by using a domain policy. Also, you can add **Netop** or **Azure** as the classroom provider and **Microsoft** as the authentication method. You configure the **Vision Student** and the **Teacher** applications the same.

- **Vision 365 Student Settings:**

Setting name: *ClassroomsProvider*

Setting type: *String*

- **Vision 365 Teacher Settings:**

Setting name: *ClassroomsProvider*

Setting type: *String*

NOTE:

- It is necessary that both the **Student** and the **Teacher** applications have the same configuration (**Microsoft**, **Google**, **Edlink**, **Netop**, or **Azure**).
- If the setting is not present, the authentication provider is **Microsoft** and the classroom provider is **Microsoft Teams for Education**. The same applies if the setting has the value “**Microsoft**”.
- If the value of the setting is “**Google**”, the authentication provider is **Google** and the classroom provider is **G Suite for Education**.
- If the value of the setting is “**Edlink**”, the authentication provider is **Edlink** and the classroom provider is **Edlink**. **Edlink** is a platform that allows **Vision 365** to interact with well known LMS/SIS systems such as Blackboard, Brightspace, Canvas, Classlink, Clever, Moodle or Schoology.
- If the value of the setting is “**Netop**”, the authentication provider is **Microsoft** and the classroom provider is **Netop**.
- If the value of the setting is “**Azure**”, the authentication provider is **Microsoft** and the classroom provider is **Azure**. For more information on how to create a classroom in the Microsoft Azure Portal, refer to the following knowledge base [article](#).

To set up the **ClassroomsProvider MDM** policy, refer to the following knowledge base [article](#).

3.2. Configure Enterprise Settings

The application’s enterprise settings can be configured using the Mobile Device Management tools.

3.3. Sign Out

The “**Sign out**” menu item in the Student application is hidden by default. Administrators can change this behavior through a domain policy.

Vision 365 Student settings:

- **Settings name:** *AllowSignOut*
- **Settings type:** *Boolean*

If this setting is present and its value is “**True**”, then the “**Sign out**” menu item from the Student application is displayed.

3.4. Google Analytics (deprecated)

NOTE: The following option will be discontinued and is now a part of the Admin policies feature in the **Netop Vision Portal**. For more information about the Admin policies feature refer to the [App behaviour](#) section.

Student and Teacher apps are enrolled by default to provide anonymous usage reports to Google Analytics. Administrators can opt-out from Google Analytics through a domain policy.

- **Vision 365 Student settings:**

Settings name: *AnalyticsOptOut*

Settings type: *Boolean*

If this setting is present and its value is “**True**”, then the Student application stops anonymous Google Analytics reporting.

- **Vision 365 Teacher settings:**

Settings name: *AnalyticsOptOut*

Settings type: *Boolean*

If this setting is present and its value is “**True**”, then the Teacher application stops anonymous Google Analytics reporting.

3.5. Additional configuration for Microsoft Azure AD

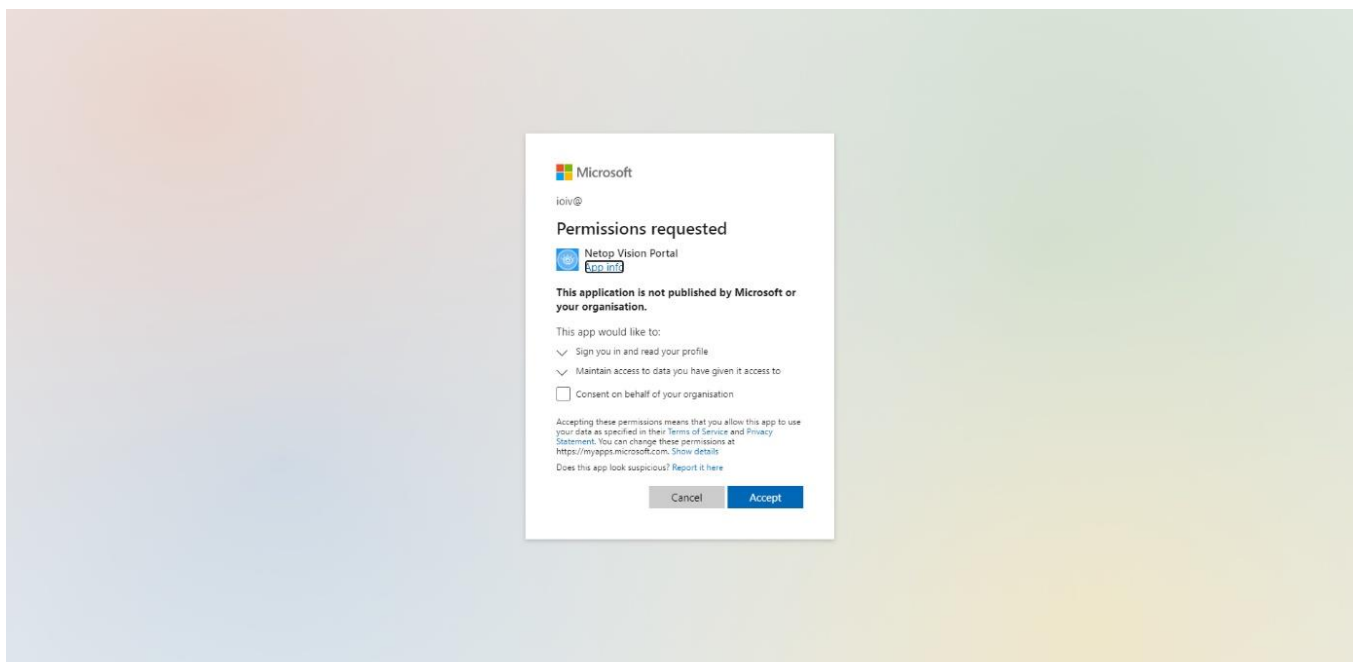
By default, all Microsoft Azure AD accounts have access to the **Vision Portal** and usage reports are unavailable. In order to limit access to Teachers (as defined in Microsoft Teams) and Admins (accounts with the **Global Admin** or **Application Admin** roles), as well as to grant Admins access to usage reports, make

sure that you perform the following configuration steps, using an **Azure AD** admin account:

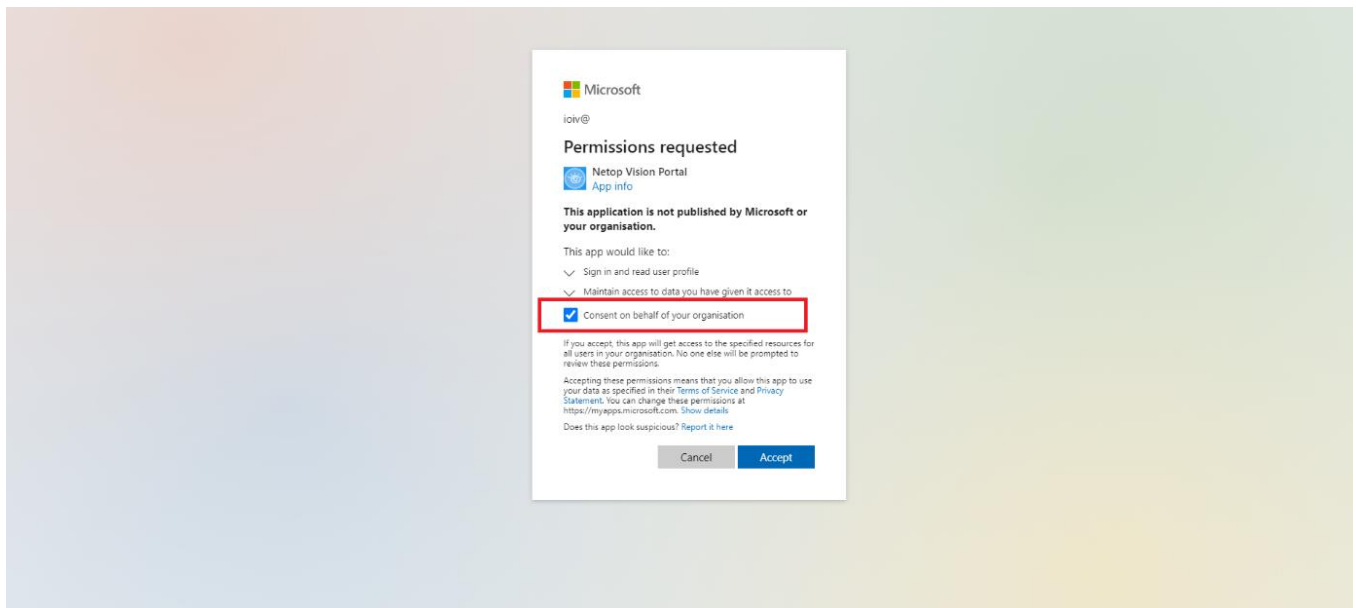
1. Go to vision.netop.com.
2. Click on the **Sign in with Microsoft** button.



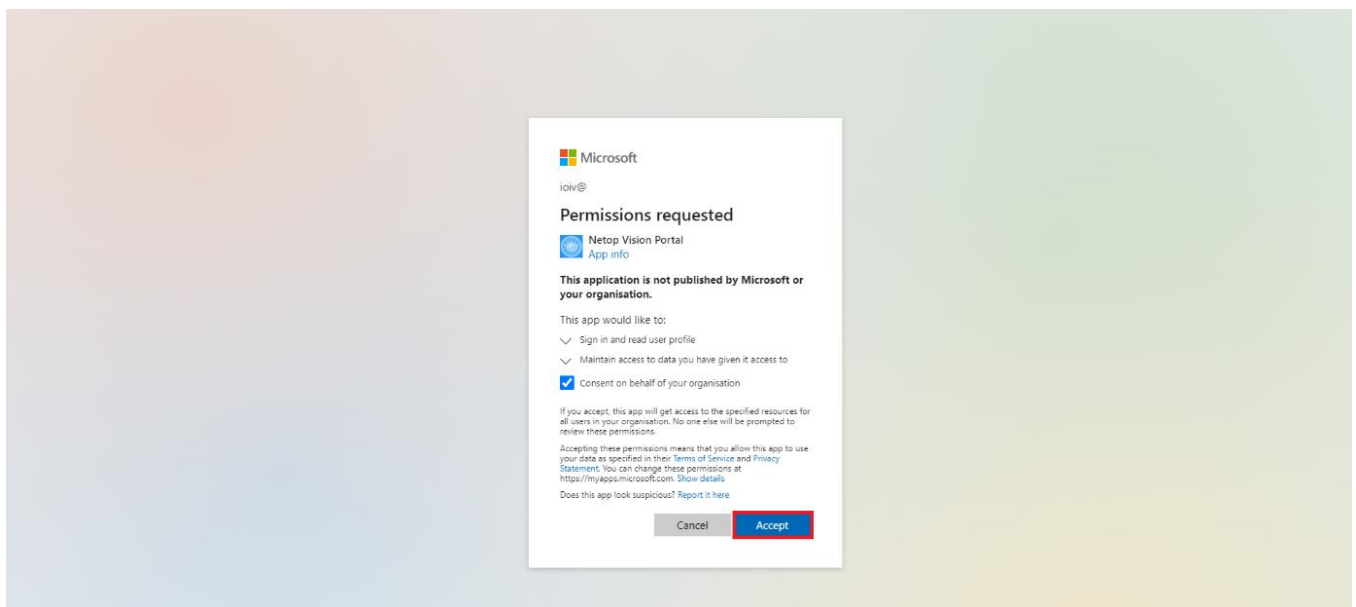
3. Use your admin account credentials to sign in. The following page is displayed.



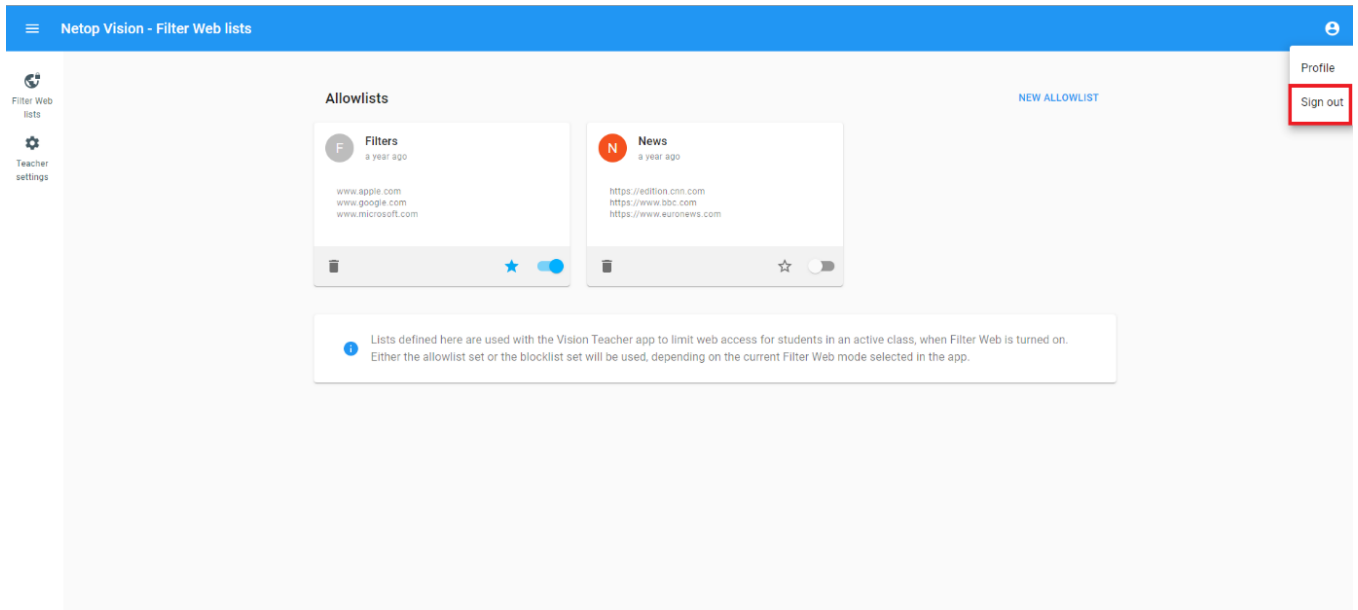
4. Check the **Consent on your behalf of your organization** checkbox.



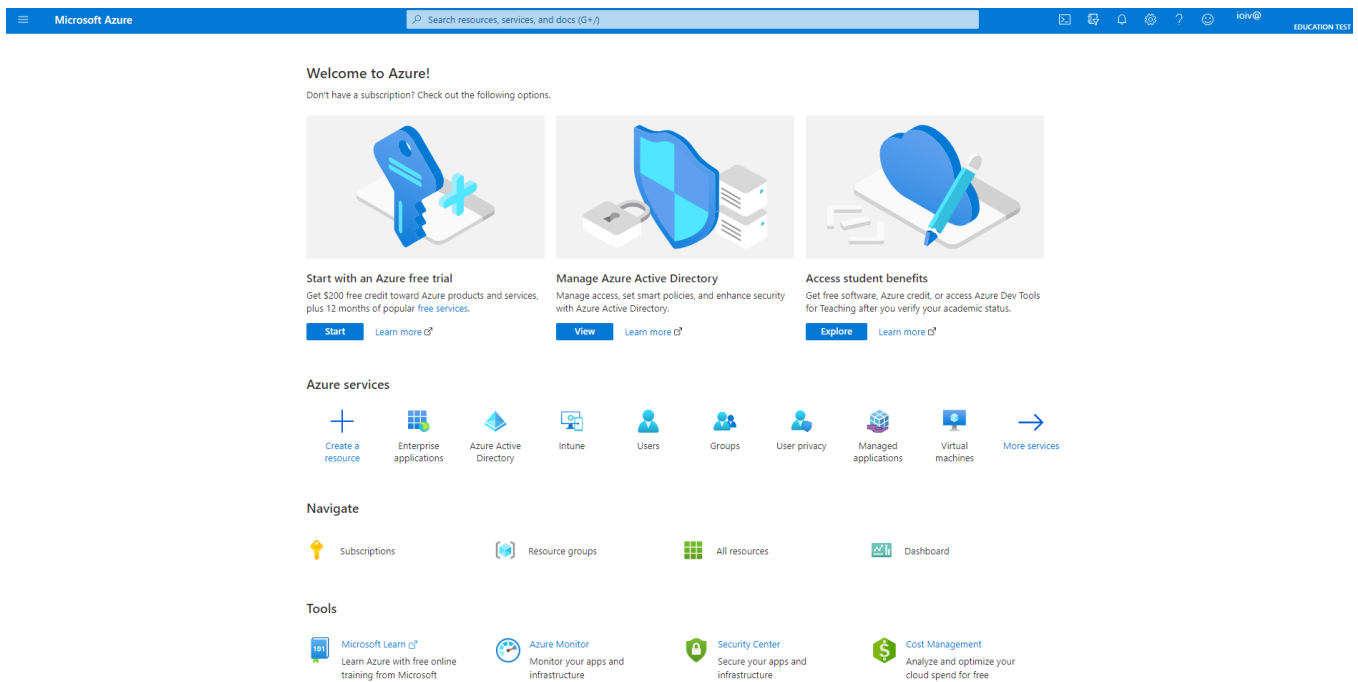
5. Click on the **Accept** button.



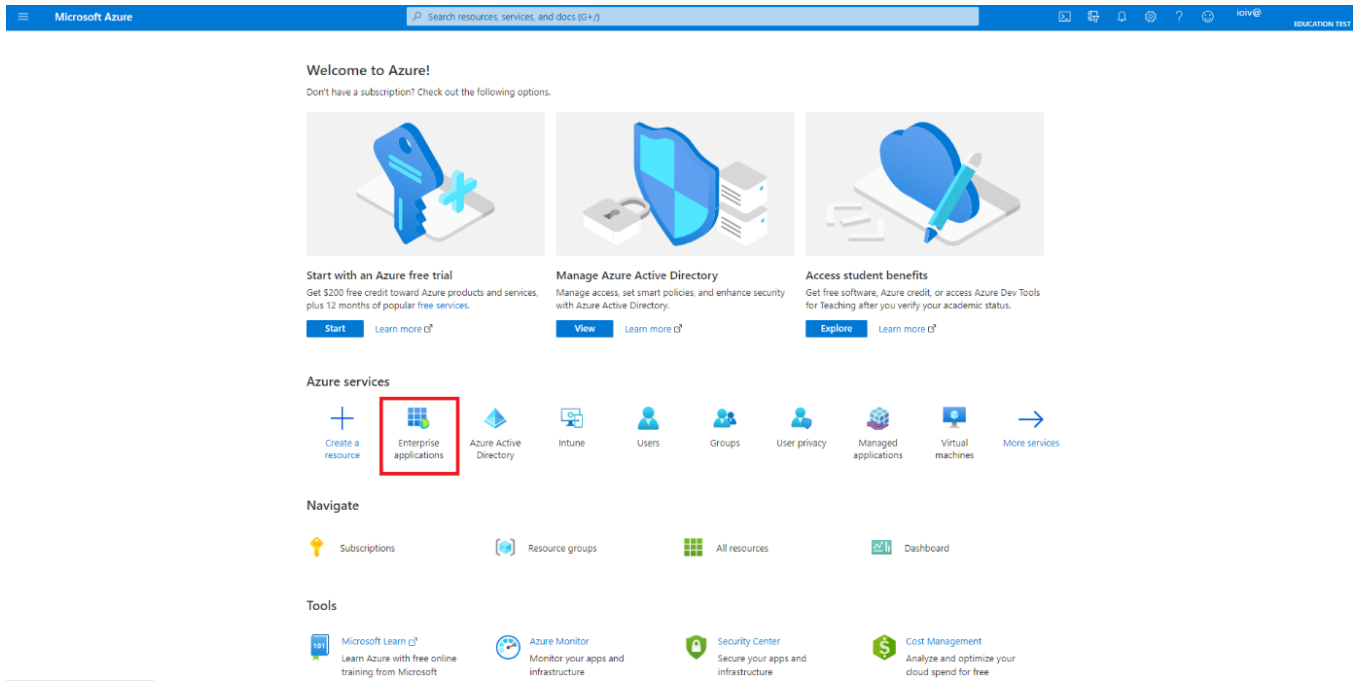
6. Sign out of the Vision Portal.



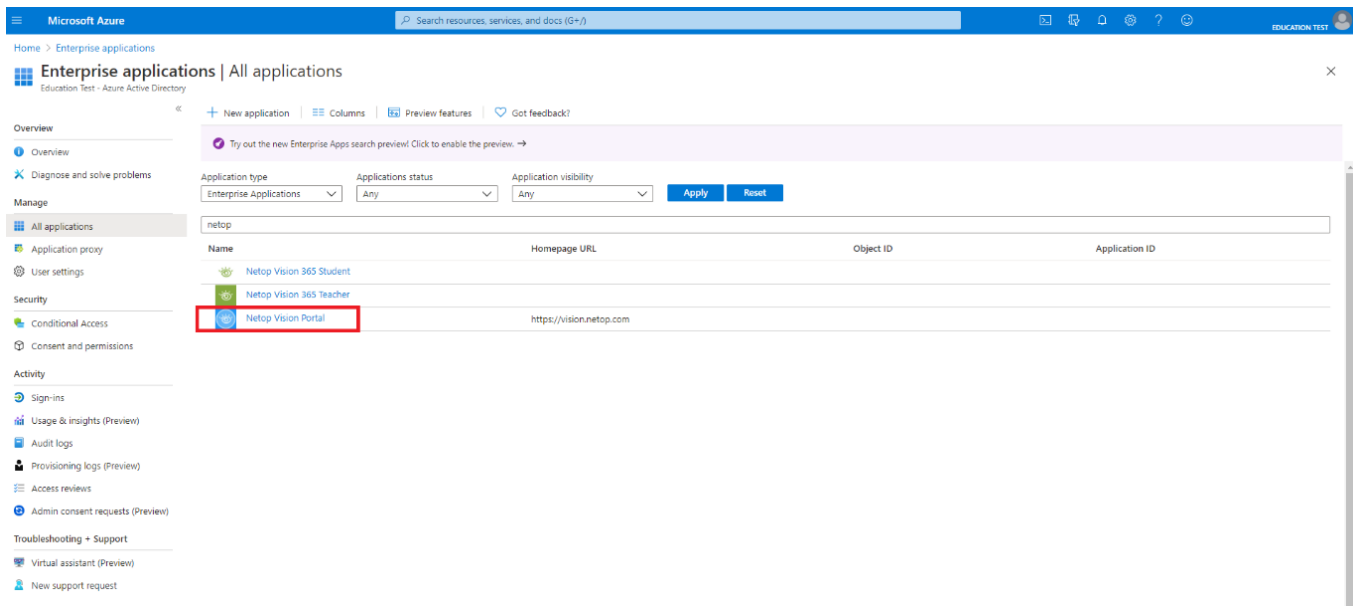
7. Go to portal.azure.com.



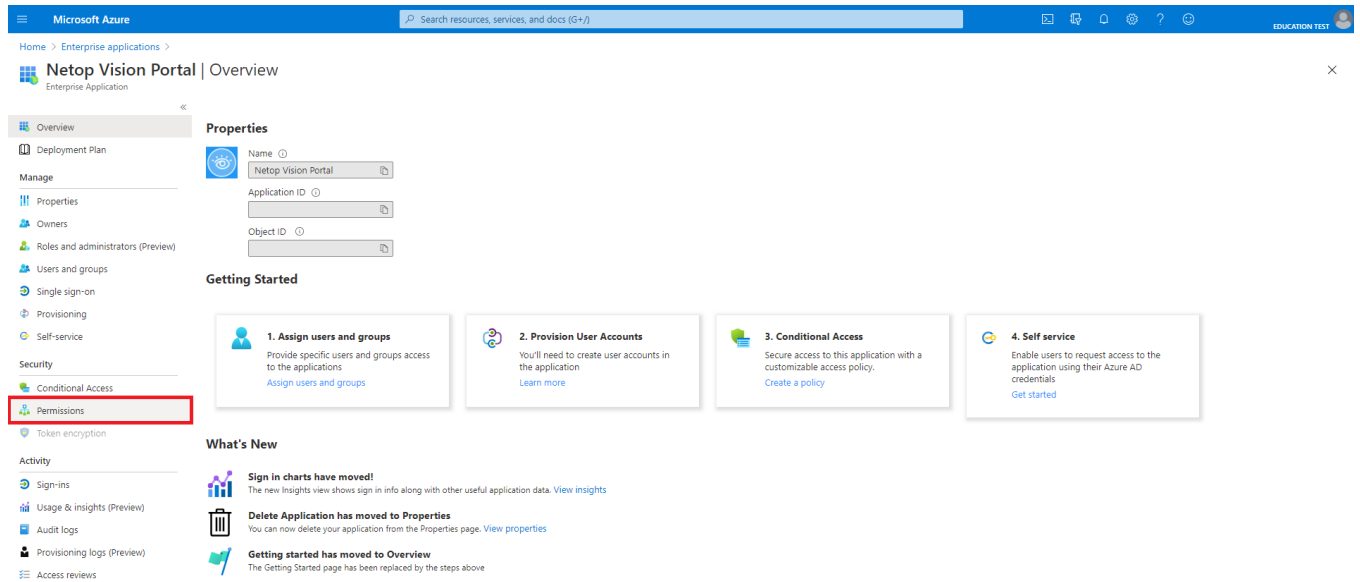
8. Click on the **Enterprise applications** tab.



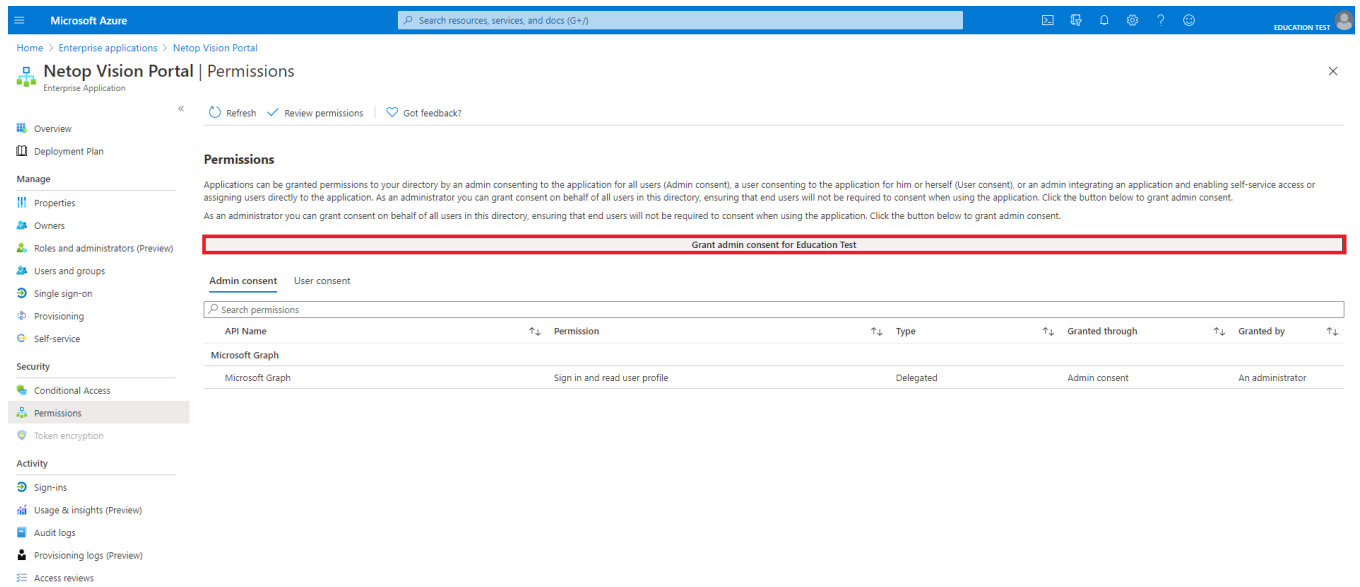
9. Click on the **Netop Vision Portal** application.



10. In the **Security** tab, click on the **Permissions** button.

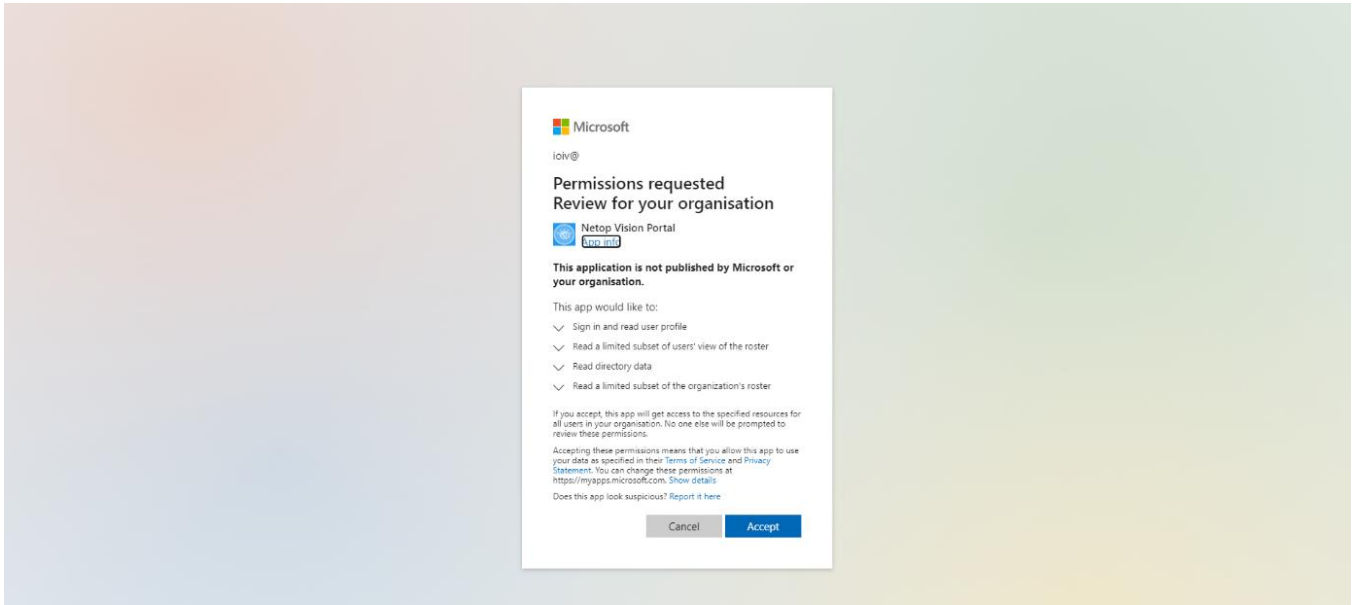


11. Click on the **Grant admin consent for** button and accept on behalf of the organization.

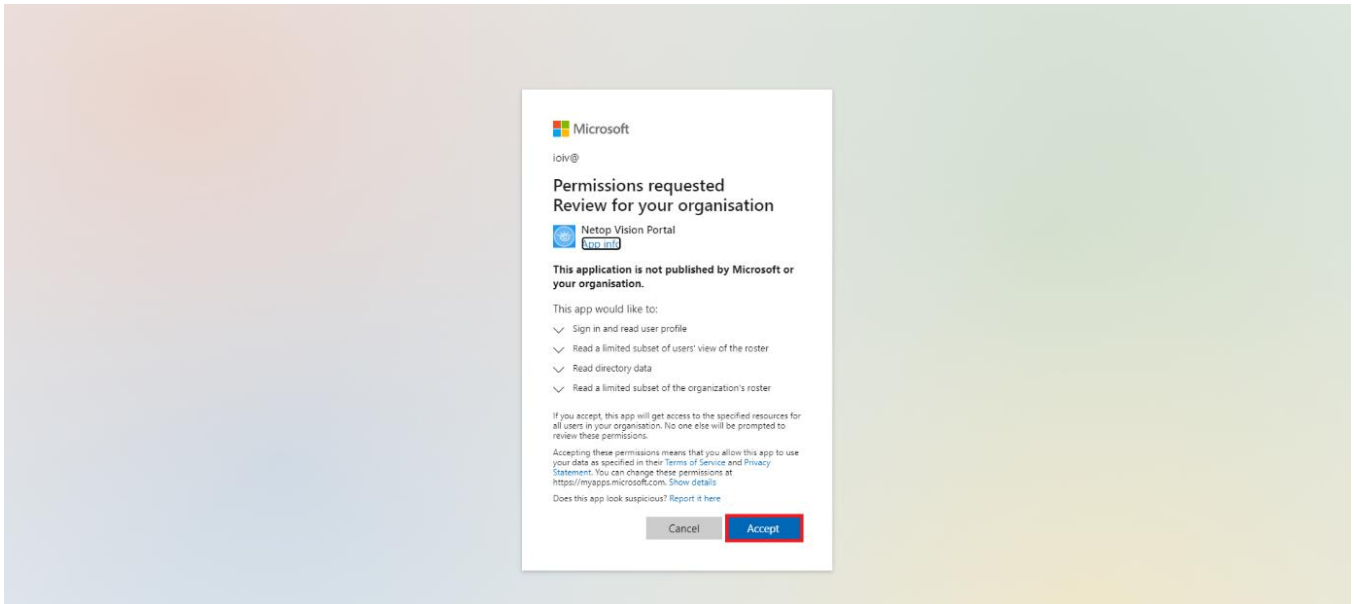


NOTE: Clicking on the **Grant admin consent** button opens a login pop-up. After logging in with the same

admin account, the following page is displayed.



12. Click on the **Accept** button.

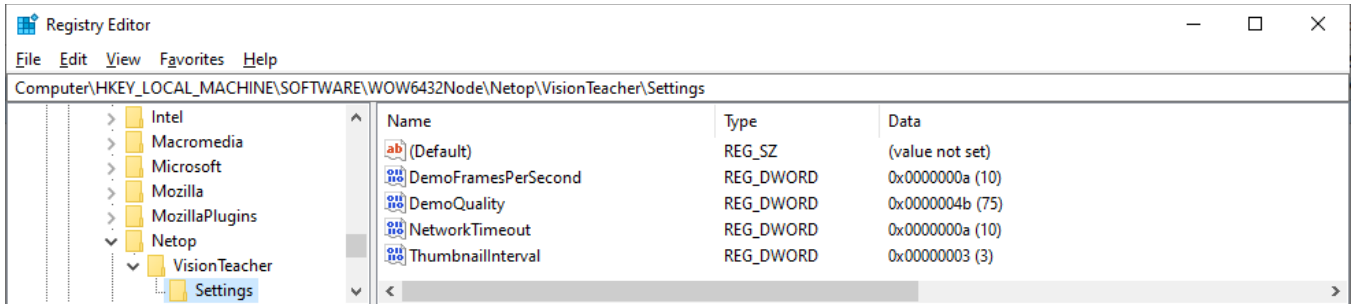


3.6. Adjust bandwidth consumption and network timeout (deprecated)

NOTE: This feature is deprecated and is now part of the **Vision Portal**. For more information about the **Admin policies**, refer to the [Networking](#) section.

To modify the network timeout and bandwidth consumption, proceed as follows:

1. Open up the Registry Editor.
2. Find or create the following key in the registry:
 - 32-bit Windows: HKEY_LOCAL_MACHINE\Software\Netop\VisionTeacher\Settings
 - 64-bit Windows:
HKEY_LOCAL_MACHINE\Software\Wow6432Node\Netop\VisionTeacher\Settings



The network timeout, expressed in seconds, is used by all the network components of the application.

- Value name: **NetworkTimeout**
- Value Type: **REG_DWORD**
- Default setting: not configured (default value 10 seconds)
- Min value: 10 seconds

The time period, expressed in seconds, after which a new thumbnail is requested.

- Value name: **ThumbnailInterval**
- Value Type: **REG_DWORD**
- Default setting: not configured (default value 3 seconds)
- Min value: 1 second (high bandwidth consumption)
- Max value: 240 seconds or **NetworkTimeout** (low bandwidth consumption)

With this setting, an admin can configure the frame rate for the demo feature.

- Value name: **DemoFramesPerSecond**
- Value Type: **REG_DWORD**
- Default setting: not configured (default value 10)
- Min value: 1 (low bandwidth consumption)
- Max value: 15 (high bandwidth consumption)

With this setting, an admin can configure the image quality for the demo feature.

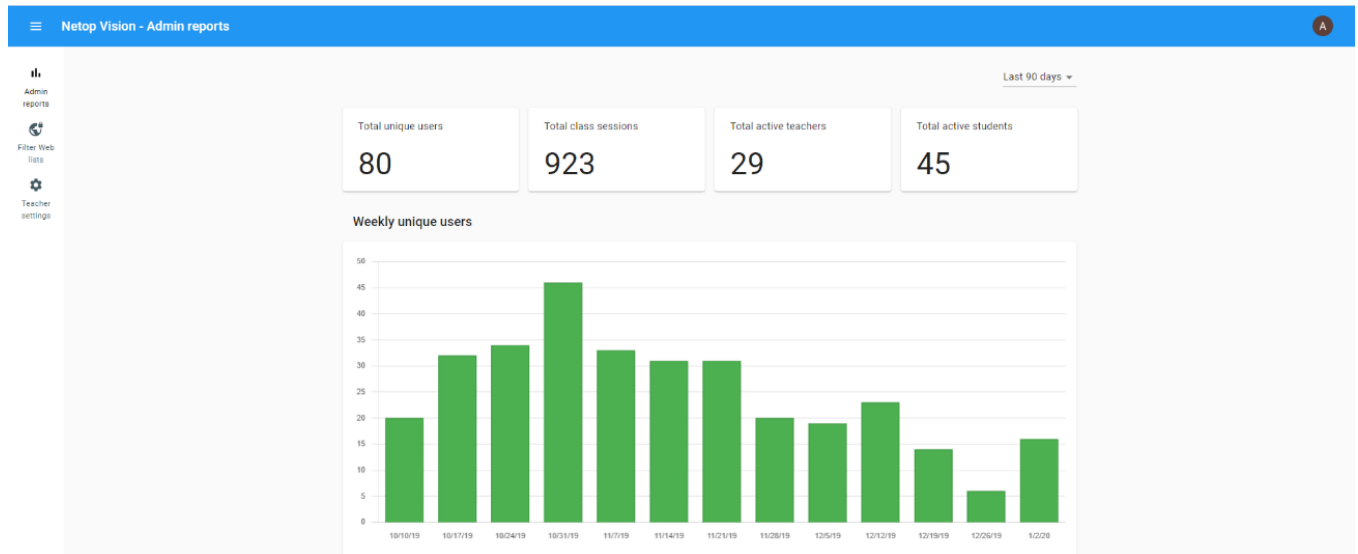
- Value name: **DemoQuality**
- Value Type: **REG_DWORD**
- Default setting: not configured (default value 75)
- Min value: 10 (low quality and bandwidth consumption)
- Max value: 100 (high quality and bandwidth consumption)

4 Admin reports

The **Admin reports** page in the **Vision Portal** provides organization admins with an overview of the **Vision** applications usage.

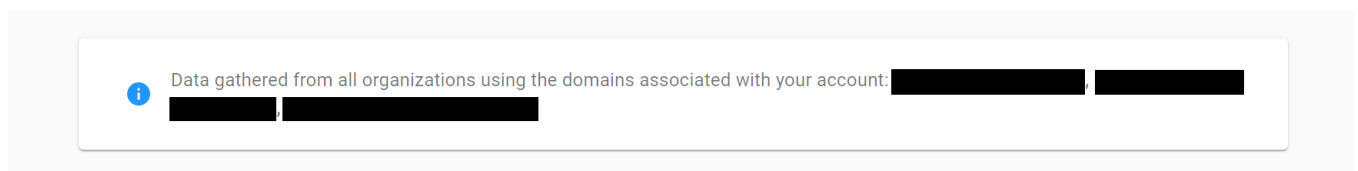
NOTE: To use the **Admin reports** feature in the **Vision Portal** with Microsoft accounts, you need to go through [the additional configuration steps](#) for the **Vision Portal**, as detailed previously in this document. Only Admin accounts have access to the **Admin reports**.

The **Admin reports** tab contains usage reports over a time span, for domain administrators, that displays how the teachers and students use and interact with the **Vision 365** application.

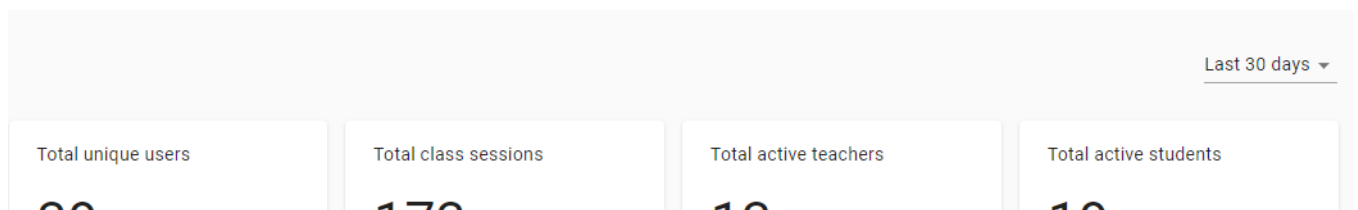


The data used in generating the usage reports is gathered from all the organizations using the domains associated with your account.

You find the domains used in generating the usage reports at the bottom of the page.



You can select the time span for the usage reports from the top of the page:



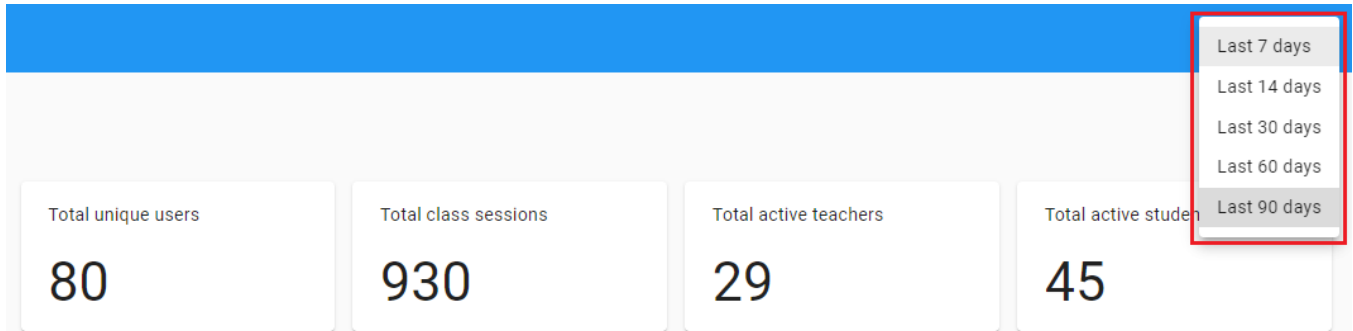
The time span values that you can select are:

- Last 7 days
- Last 14 days
- Last 30 days

- Last 60 days
- Last 90 days

NOTE:

- For the last 7, 14, and 30 days the usage reports display **daily** unique users, active teachers, active classes, class sessions, class features, and most active teachers.
- For the last 60 and 90 days, the usage reports display **weekly** unique users, active teachers, active classes, class sessions, class features, and most active teachers.

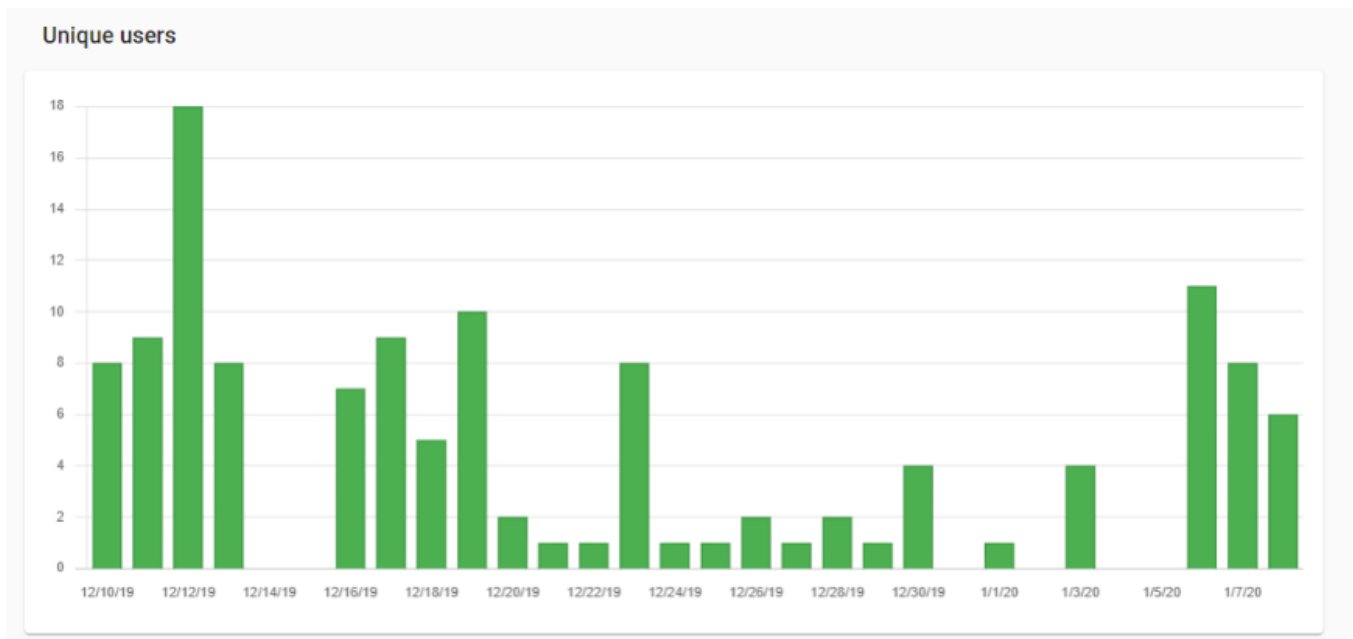


The following table describes the displayed values:

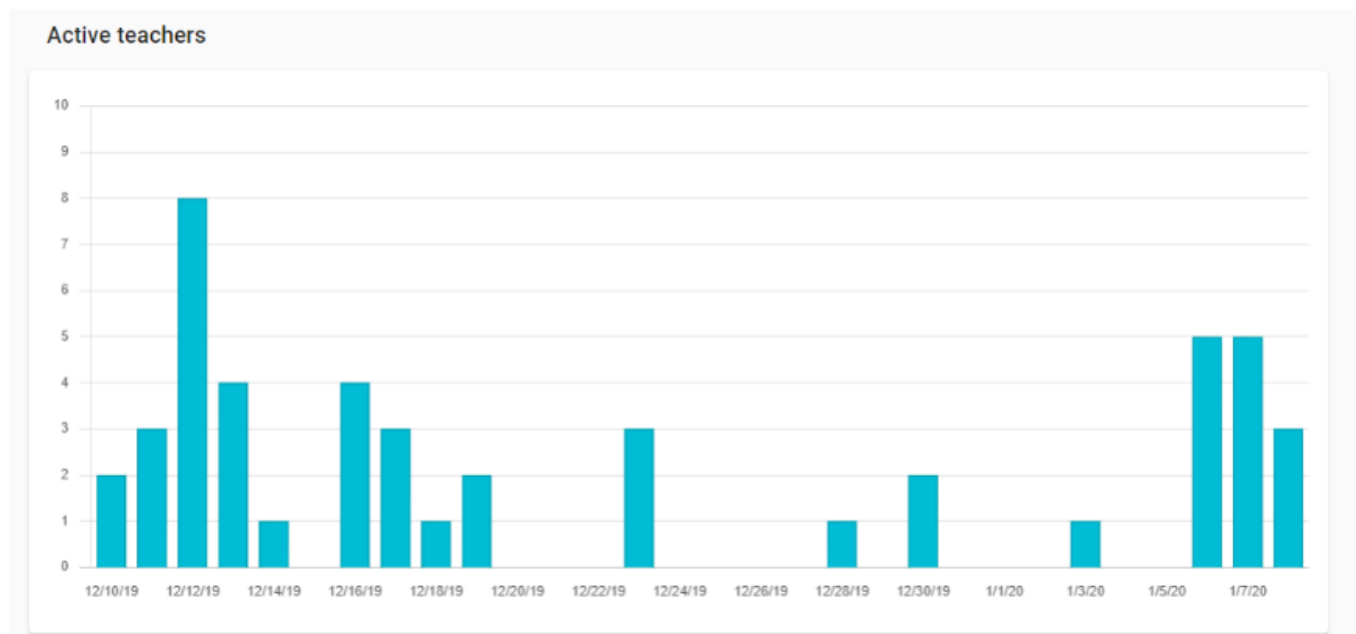
Value	Description
Total unique users	This value represents the total number of users that have logged in the Vision app.
Total class sessions	This value represents the total number of times a class has been started.
Total active teachers	This value represents the total number of unique teachers that started a class.
Total active students	This value represents the total number of unique students that joined an active class.

Several usage report charts are available:

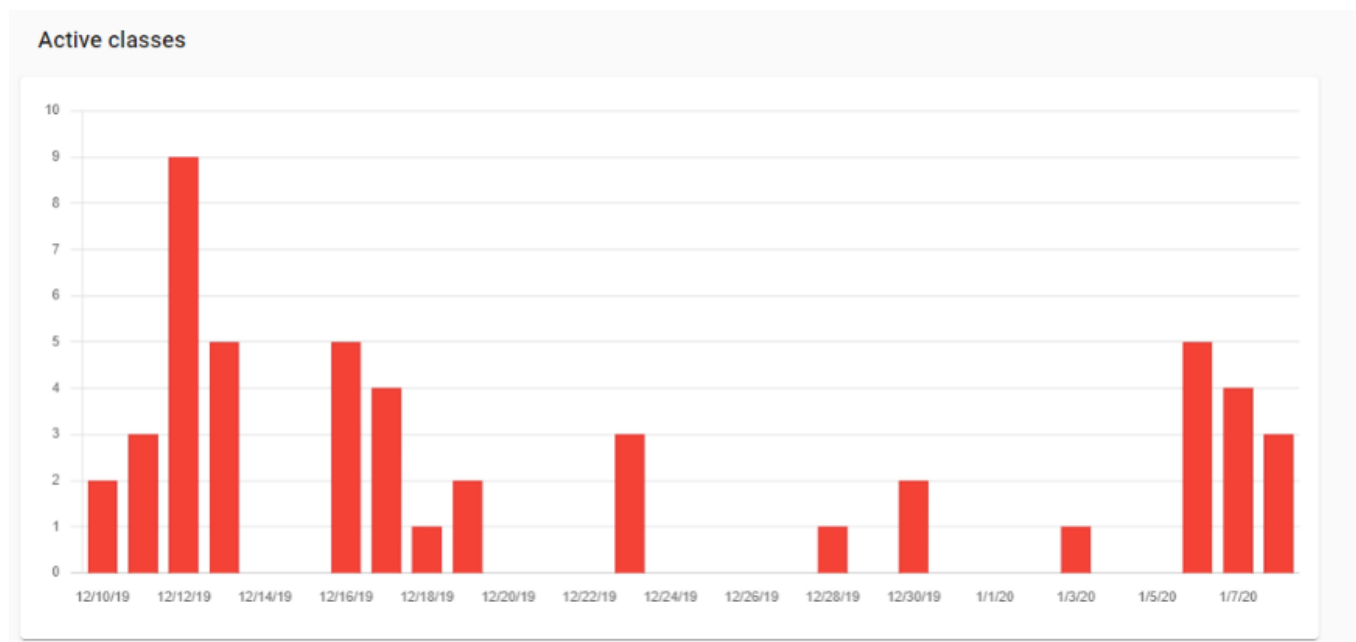
- **Unique users** – displays the total number of unique logins to the **Vision** app, per day or week, during the selected time span.



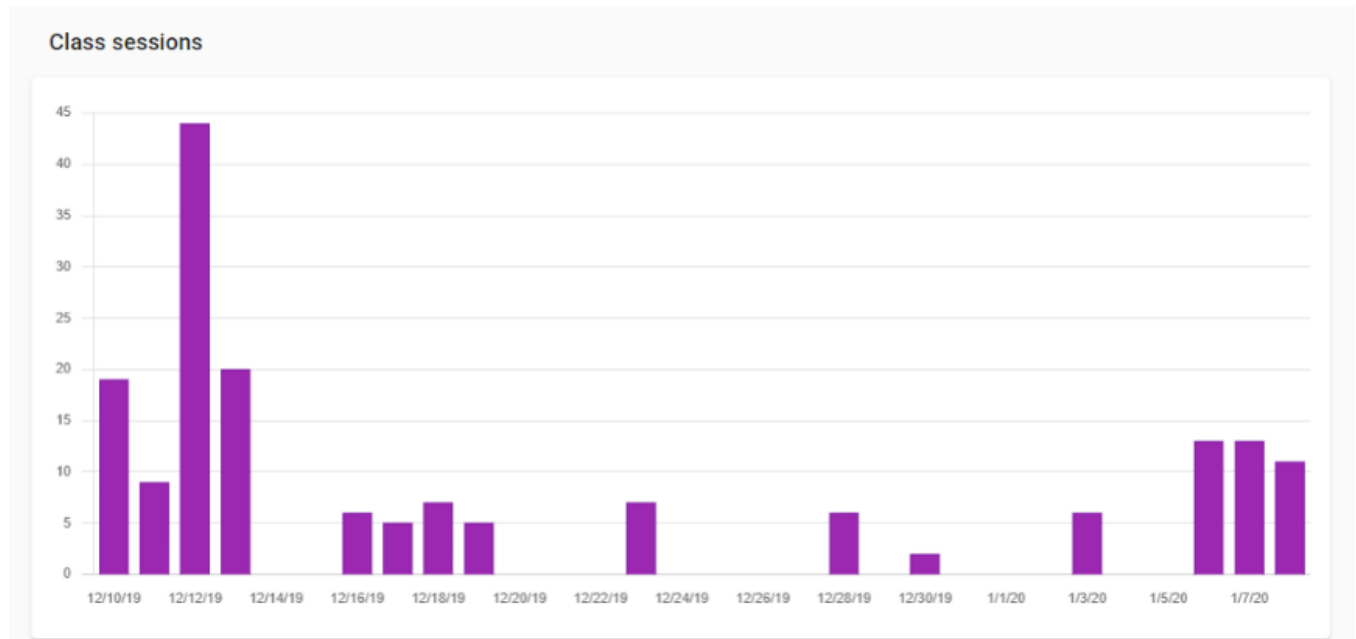
- **Active Teachers** – displays the total number of **Teachers** that started a class, per day or week, during the selected time span.



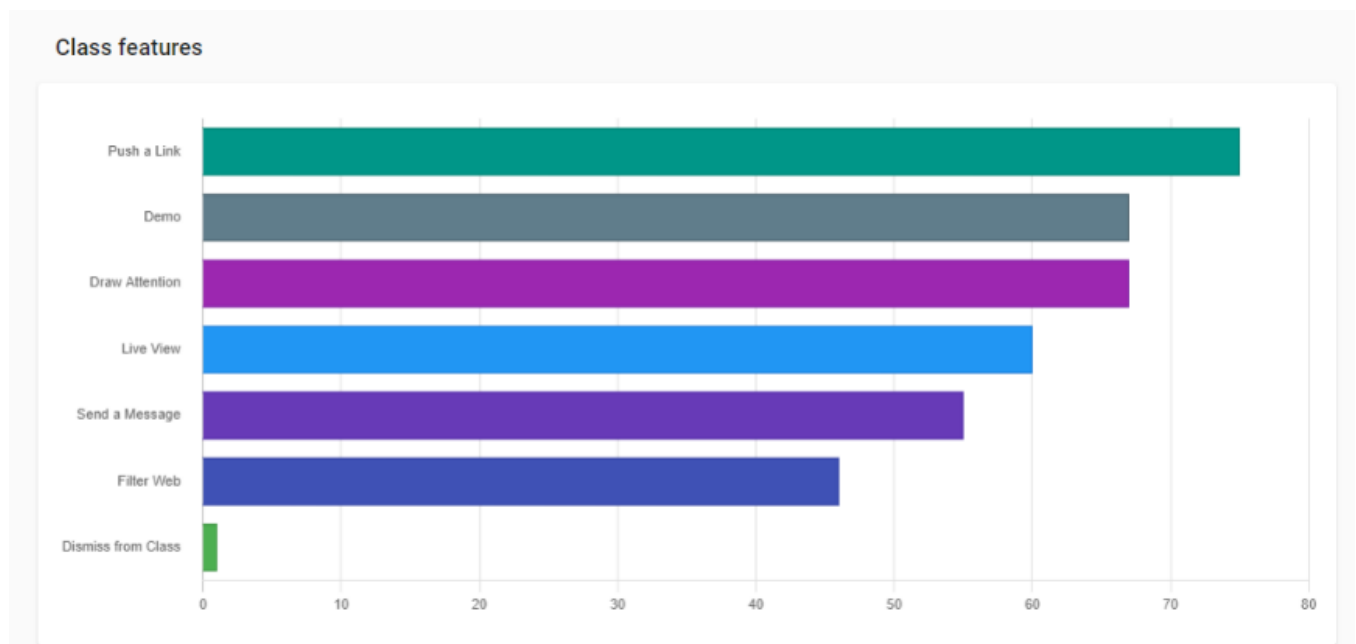
- **Active classes** – displays the total number of classes that were started at least once, per day or week, during the selected time span. Multiple start class events for the same class are counted only once per interval.



- **Class sessions** – displays the total number of times classes were started. per day or week, during the selected time span. All start class events for all classes are counted per interval.



- **Class features** - displays the total number of times each class feature was used during the selected time span.



- **Teachers by feature usage** – displays the top 10 teachers based on the number of features used in an active class.

Teachers by feature usage	
Teacher email	Feature start events
kpmg-teacher@[REDACTED]	331
sales_t1@[REDACTED]	46
vsd_t2@[REDACTED]	32
alisateacher@[REDACTED]	21
jasonteacher@[REDACTED]	7
sales_t7@[REDACTED]	4

To download the usage reports, click on the **Export report data** button. The exported report data are `.csv` files and they contain the following data:

- Active classes
- Active teachers
- Class features
- Class sessions
- Metric
- Teachers by feature usage
- Unique users



You can use the browser's default **Print** function in order to print the usage reports or save them as a **PDF**

file.

The screenshot displays the Netop Vision Usage Reports interface. The main report area shows the following data:

Metric	Value
Total unique users	39
Total class sessions	173
Total active teachers	13
Total active students	19

Additional report details include: Requested by admin: Andrei Teacher (andrei_teacher@gedu-demo-netop.com) and Time range: 12/9/19 - 1/8/20. The interface also features a print settings sidebar on the right with options for Destination (Save as PDF), Pages (All), and Layout (Portrait). At the bottom right, there are 'Save' and 'Cancel' buttons.

5 Admin policies

With the **Admin policies** feature, admins can configure the following:

- **Student monitoring**

Student monitoring

Refresh interval for the student cards	<div style="border-bottom: 1px solid #ccc; padding-bottom: 2px;">Interval in seconds</div> <small>3 - 180 seconds; leave empty for application default.</small>
--	---

- **IP address restrictions**

IP address restrictions

- No restriction**
Students join classes regardless of their IP address. This may be a privacy risk.
- Match the teacher IP address**
Students join classes only if the first half of their external IP address is the same as the teacher's.
- Match the teacher IP address or a whitelisted network**
Students join classes only if the first half of their external IP address is the same as the teacher's or it matches one of the whitelisted networks.
- Match a whitelisted network**
Students join classes only if their IP address matches one of the whitelisted networks.

- **Active hours**

Active hours

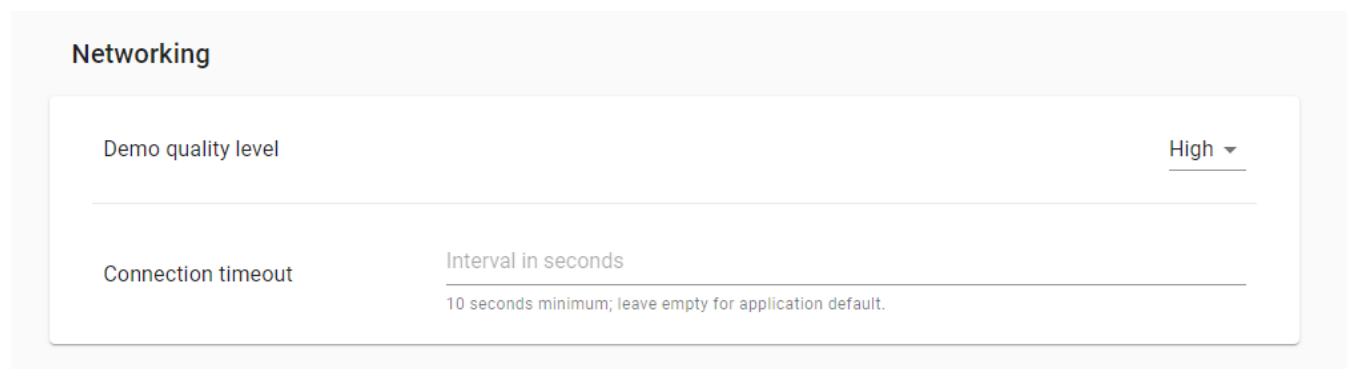
Time zone	Europe/Dublin - Greenwich Mean Time GMT-00:00 ▾
<div style="display: flex; justify-content: space-between; align-items: center;"> Allow classes to start and run only during active hours intervals <input checked="" type="checkbox"/> </div>	
<div style="display: flex; align-items: center;"> Monday, Tuesday, Wednesday, Thursday, Friday ▾ from 7:00 AM ▾ to 4:00 PM ▾ 🗑️ </div>	
NEW INTERVAL	

- **App behavior**

App behavior

Send anonymous data to Google Analytics from Vision Student	<input checked="" type="checkbox"/>
Only use class teams from Microsoft Teams	<input checked="" type="checkbox"/>

- **Networking**



Networking

Demo quality level High ▾

Connection timeout Interval in seconds

10 seconds minimum; leave empty for application default.

5.1 Student monitoring

From the **Student monitoring** section, you can change the following:

- **Refresh interval for the student cards**

The rate at which the student desktop is captured as well as the interval at which updates are sent to the Teacher application can be modified in order to save network resources. The refresh interval value is specified in seconds and needs to be larger than the default value (default value is set to **3** seconds) and less than the **Connection timeout** value.

5.2 IP address restrictions

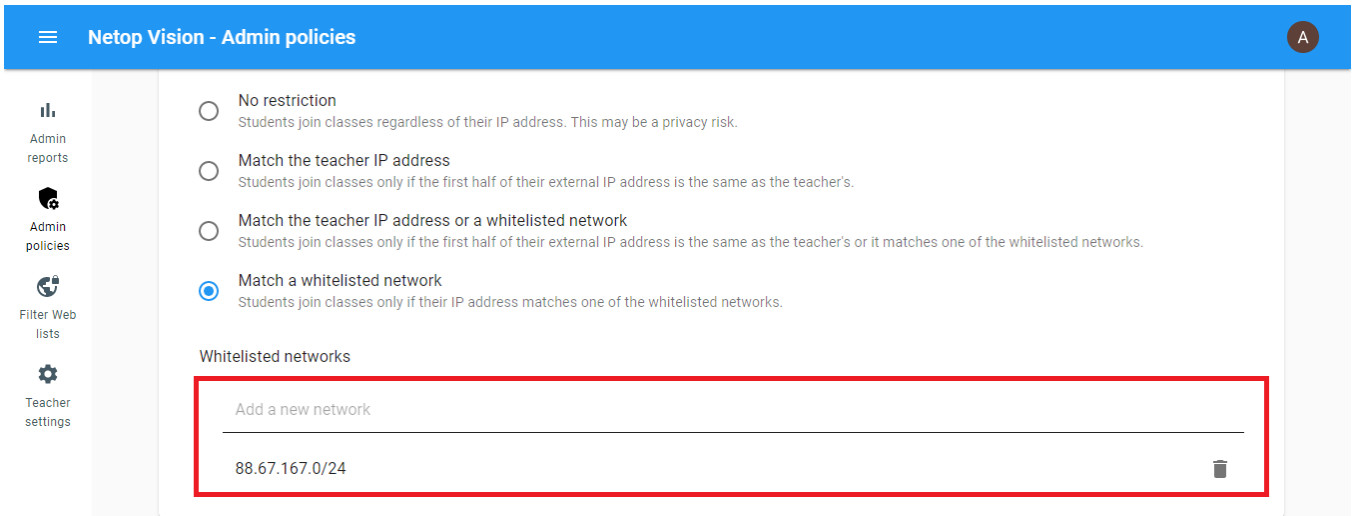
With the **Admin policies** feature, admins can apply IP address restrictions.

From the IP address restrictions, you can select:

- **No restriction** - no IP address restriction is applied. This means that Students can connect to the Teachers' class regardless of their IP address.
- **Match the teacher IP address** – the first two octets of the Teacher and Student IP addresses must match for a successful connection.
- **Match the teacher IP address or a whitelisted network** – the following setting allows administrators to add a whitelisted network IP addresses and masks using the CIDR notation. The first two octets of the

Teacher and Student IP addresses must match for a successful connection between Teacher and Student devices.

- **Match a whitelisted network** – the following setting allows admins to manually add the whitelisted network IP in order to have a successful connection between Teacher and Student devices.

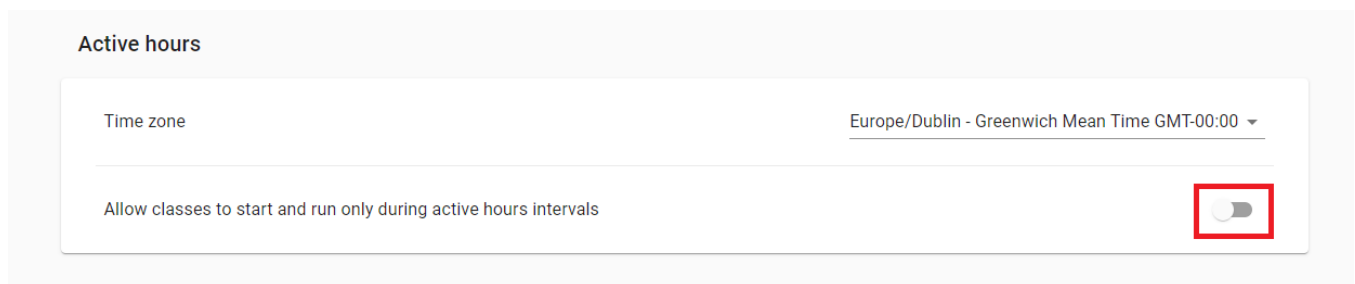


5.3 Active hours

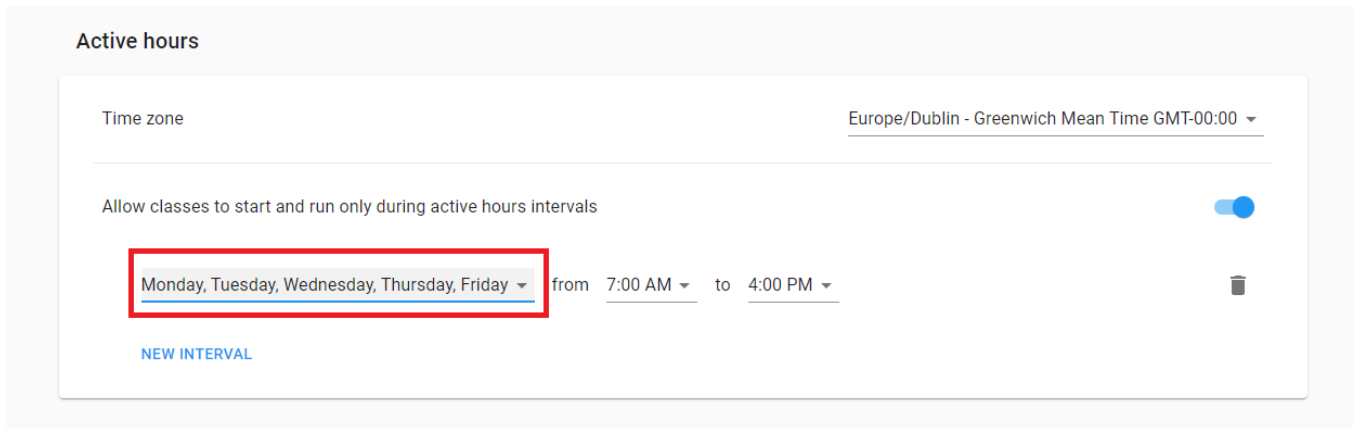
With the **Active hours** policy, administrators can set up a time interval for when the classes are active. A class that is outside the set up time interval cannot be started or accessed. If classes are placed in a different time zone, administrators can use the Time zone radio button to set it up accordingly to their needs.

To set up a schedule, proceed as follows:

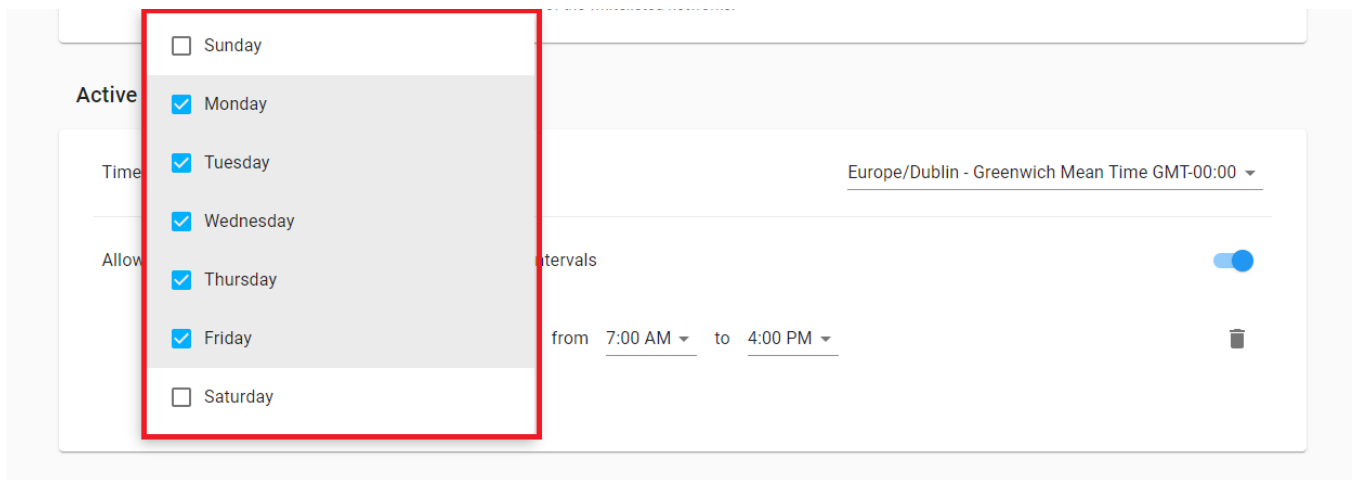
1. Go to **Admin policies**.
2. Click on the **Enable** button.



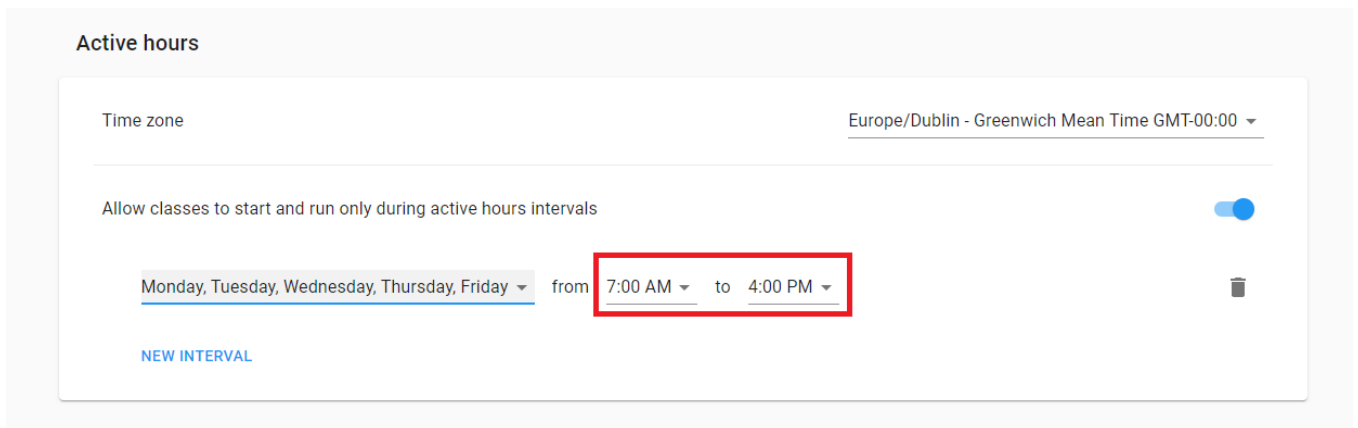
3. Select a day interval by clicking on the drop-down button.



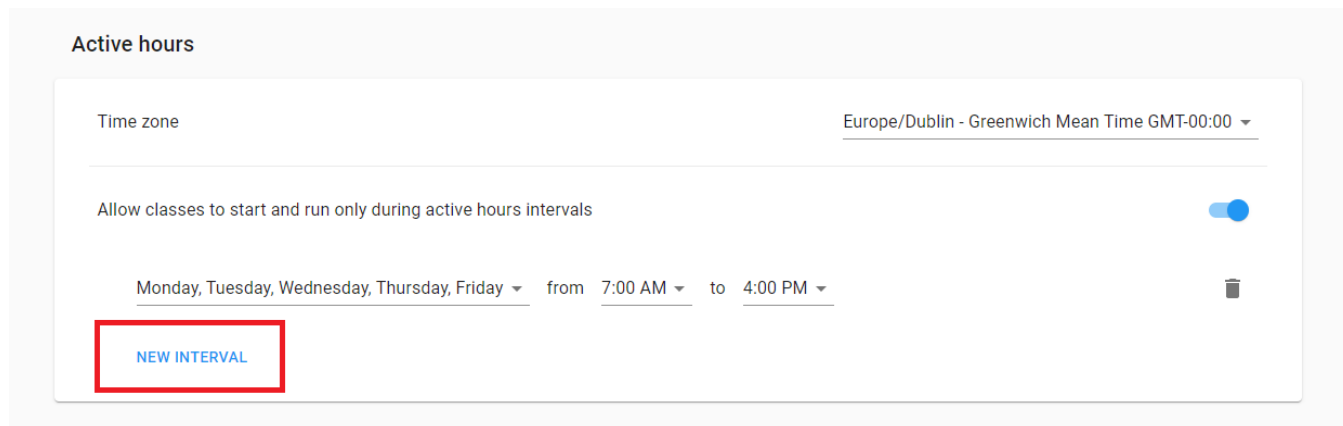
You can select all days or specific days accordingly to your needs.



4. Select a time interval by clicking on the drop-down button.



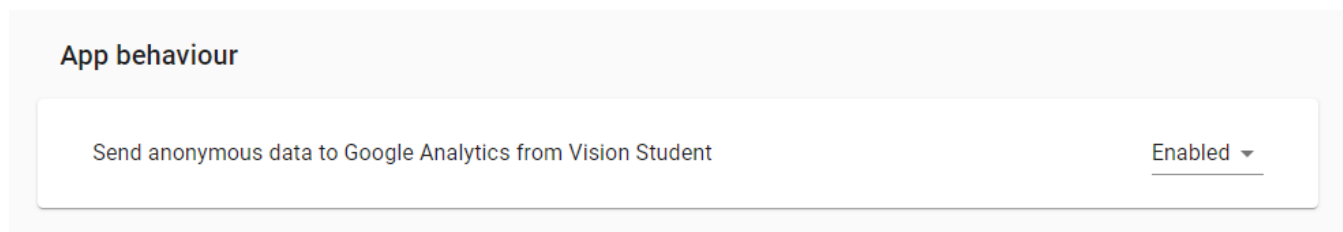
To add another interval, click on the **New Interval** button.



5.4 App behaviour

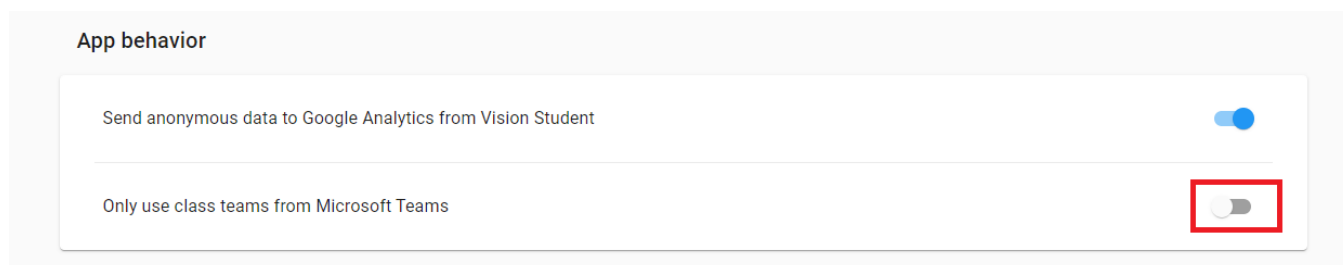
From the **App behaviour** you can Enable or Disable Google Analytics. **Netop Vision** sends information such as clicks and view count to Google Analytics, which we use to improve our product. This option makes the application stop sending this kind of information.

By default, the options is set to **Enabled**. To disable the policy, click on the **Enabled** button and click on **Disabled**.



Also, from the **App behaviour** policy you can enable or disable the **Only use classes from Microsoft Teams** option. If disabled, this option allows you to display both classes and teams from Microsoft Teams in the Vision 365 Teacher application.

To enable the option, click on the **Enable** button. By default, the option is enabled.



5.5 Networking

From the **Networking** section you can change the following settings:

- Demo quality level
- Connection timeout

5.5.1 Demo quality level

This setting allows admins to modify the demo quality and bandwidth consumption of the **Demo** feature.

You can select from the following options:

- **High** - high demo quality and bandwidth consumption
- **Medium** - medium demo quality and bandwidth consumption
- **Low** - low demo quality and bandwidth consumption

NOTE: The default value is set to **High**.

5.5.2 Connection timeout

This setting specifies the maximum period of network inactivity after which the Student application disconnects from the Teacher application. A higher value can solve connection issues on slower or congested Wi-Fi networks. The connection timeout value is specified in seconds and needs to be larger than the default value (the default value is set to 10 seconds).

6 Troubleshooting

Requirements for the **Vision 365 Teacher** and **Student** applications:

- Windows 10 - Version 1809 or higher
 - NOTE:** If you are running an older version of Windows 10, the available version of the **Vision 365** applications from the Microsoft Store is **10.7.1516**.
- Make sure that **Vision Pro** isn't installed on the devices (teacher and student)
- Access to **Microsoft Teams** or **Microsoft School Data Sync**
- Grant permissions for **Vision 365** applications (**Teacher** and **Student**) to read data from **Office 365 Education**

Make sure that the following ports are open:

- Teacher:
 - **UDP - 60001**
 - **TCP - 60000, 60002, 60003**
- Student:
 - **UDP – 59999** (deprecated)

For more information on how to limit the dynamically allocated ports for the Student application, refer to the following Microsoft [article](#).

Make sure that the following Netop **Vision 365** application folders are accessible or have the **FULL CONTROL** permission:

- Teacher:
 - **Store app** -
%LOCALAPPDATA%\Packages\NetopSolutions.VisionTeacher_m7p600ccwap2t\
 - **Sideload app** -
%LOCALAPPDATA%\Packages\NetopSolutions.VisionTeacher_21dnbha44a66p\
- Student:
 - **Store app** -
%LOCALAPPDATA%\Packages\NetopSolutions.NetopSolutions.NetopVisionStudent_m7p600ccwap2t\
 - **Sideload app** -
%LOCALAPPDATA%\Packages\NetopSolutions.NetopSolutions.NetopVisionStudent_21dnbha44a66p\

Make sure that the following URLs are accessible for **Vision 365** for Windows to function correctly:

- <https://visioncos.netop.com>
- <https://vision-icon.netop.com>
- <https://graph.microsoft.com>
- <https://login.microsoftonline.com>
- <https://login.microsoft.com>

- <https://clients2.google.com>

For more information on the Vision 365 Connection process, refer to the following knowledge base [article](#).

6.1 Logs

Make a zip file with the files located in the locations below:

6.1.1 Student logs

For the Store app, the log files can be found at the following folder path:

```
%LOCALAPPDATA%\Packages\NetopSolutions.NetopVisionStudent_m7p600ccwap2t\LocalCache\BackgroundLog\
```

(e.g.
:\Users\\AppData\Local\Packages\NetopSolutions.NetopVisionStudent_m7p600ccwap2t\LocalCache\BackgroundLog\)

```
%LOCALAPPDATA%\Packages\NetopSolutions.NetopSolutions.NetopVisionStudent_m7p600ccwap2t\LocalCache\MainLog\
```

(e.g.
:\Users\\AppData\Local\Packages\NetopSolutions.NetopSolutions.NetopVisionStudent_m7p600ccwap2t\LocalCache\MainLog\)

For the Sideload app, the log files can be found at the following folder path:

```
%LOCALAPPDATA%\Packages\NetopSolutions.NetopVisionStudent_21dnbha44a66p\LocalCache\BackgroundLog\
```

(e.g.
:\Users\\AppData\Local\Packages\NetopSolutions.NetopVisionStudent_21dnbha44a66p\LocalCache\BackgroundLog\)

```
%LOCALAPPDATA%\Packages\NetopSolutions.NetopSolutions.NetopVisionStudent_21dnbha44a66p\LocalCache\MainLog\
```

(e.g.
:\Users\\AppData\Local\Packages\NetopSolutions.NetopSolutions.NetopVisionStudent_21dnbha44a66p\LocalCache\MainLog\)

6.1.2 Teacher logs

For the Store app, the log files can be found at the following folder path:

```
%LOCALAPPDATA%\Packages\NetopSolutions.VisionTeacher_m7p600ccwap2t\LocalCache\BackgroundLog\
```

(e.g.
:\Users\\AppData\Local\Packages\NetopSolutions.VisionTeacher_m7p600ccwap2t\LocalCache\BackgroundLog\)

```
%LOCALAPPDATA%\Packages\NetopSolutions.VisionTeacher_m7p600ccwap2t\LocalCache\MainLog\
```

(e.g.
:\Users\\AppData\Local\Packages\NetopSolutions.VisionTeacher_m7p600ccwap2t\LocalCache\MainLog\)

For the Sideload app, the log files can be found at the following folder path:

```
%LOCALAPPDATA%\Packages\NetopSolutions.VisionTeacher_21dnbha44a66p\LocalCache\BackgroundLog\
```

(e.g.

```
:\Users\\AppData\Local\Packages\NetopSolutions.VisionTeacher_21dnbha44a66p\LocalCache\BackgroundLog\)
```

```
%LOCALAPPDATA%\Packages\NetopSolutions.VisionTeacher_21dnbha44a66p\LocalCache\MainLog\
```

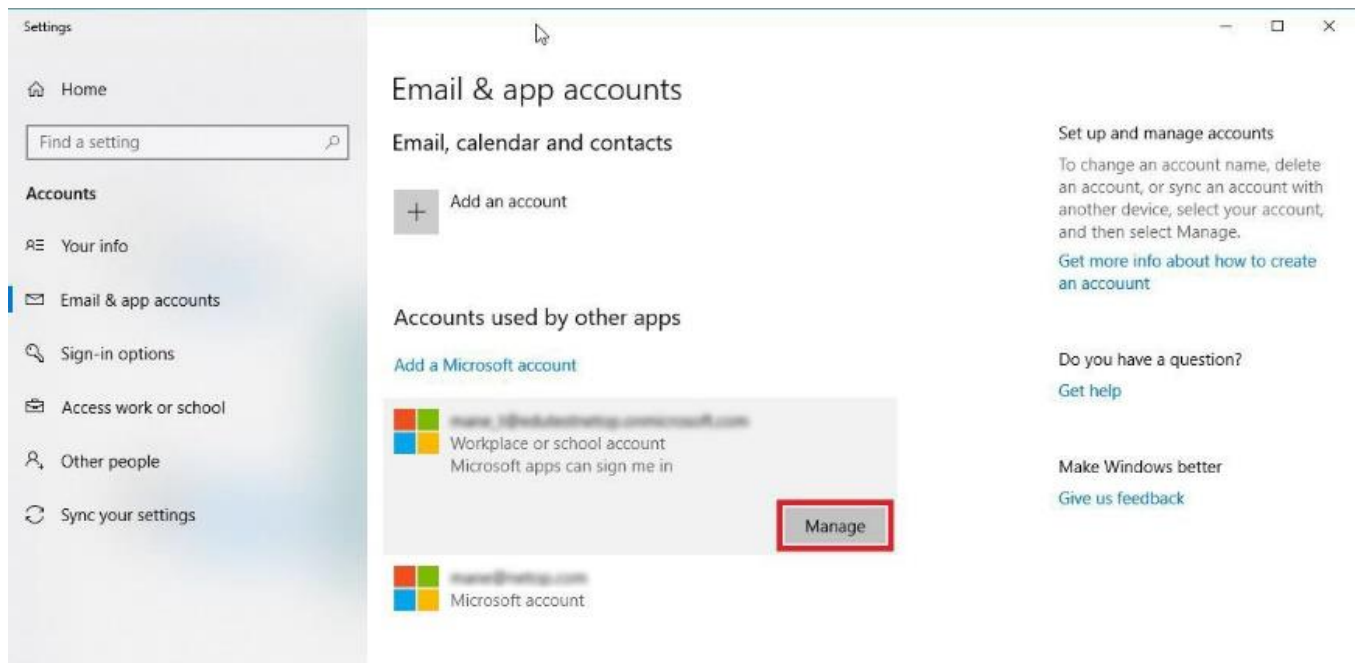
(e.g.

```
:\Users\\AppData\Local\Packages\NetopSolutions.VisionTeacher_21dnbha44a66p\LocalCache\MainLog\)
```

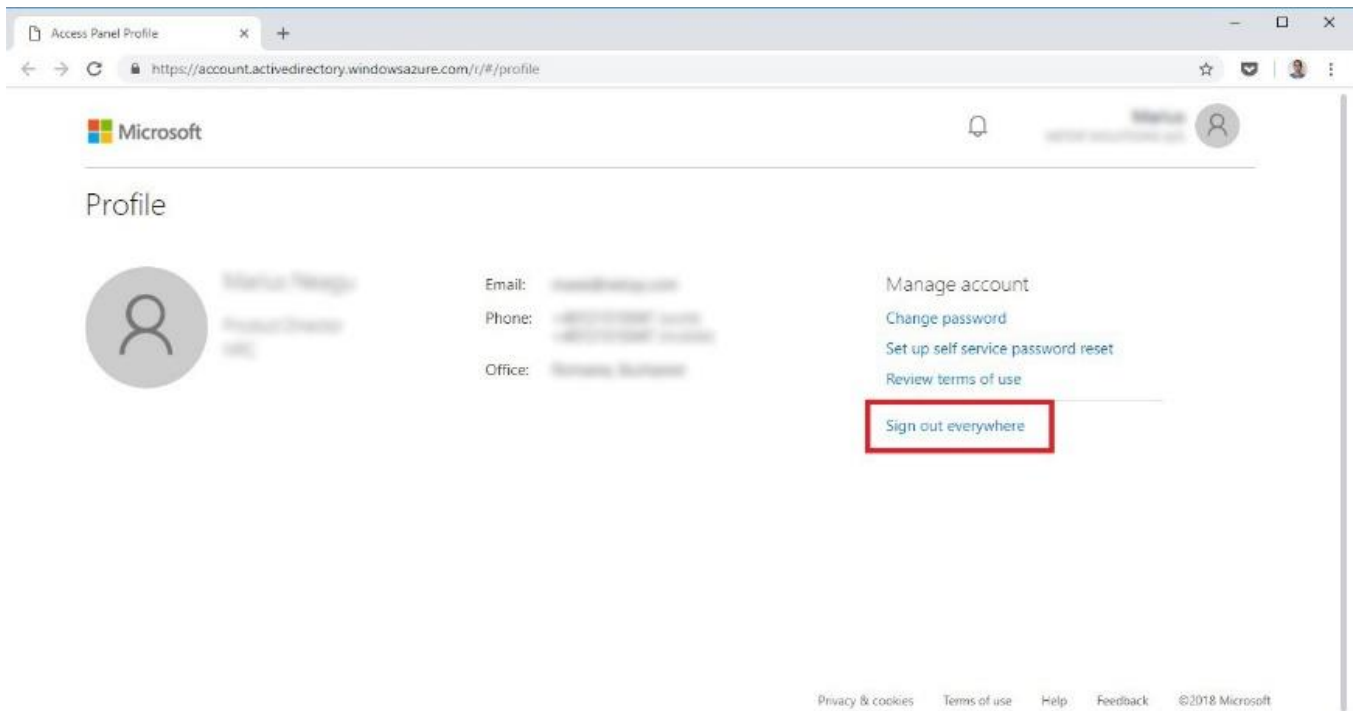
6.2 How to login with a different user if I chose to store my credentials with Windows

To log in with a different user, proceed as follows:

1. Log out from the teacher or student application.
2. Go to **Settings > Accounts > Email & app accounts**.
3. Click on the **Manage** button for the account you want to disconnect from.



4. Click on the **Sign out everywhere** button.



5. Go back to the application.

6. Log in again. You have the option of adding a different account.



Let's get you signed in



www.microsoft.com



6.3 Prevent students from turning off web filter extension for Edge

By default, Microsoft Edge allows users to uninstall extensions. To prevent students from uninstalling the Edge extension for the **Vision 365** application, refer to the following Microsoft [article](#).